



Novelties & price list 2024

Open-pollinated Varieties | Organic Breeding

Vegetables | Herbs | Flowers



Organic.
Fair.
Dynamic.



Additions to the 2023|2024 catalogue

In this new product catalogue we provide information about our new varieties, advise you of changes to our standard range and discuss various horticultural topics. Find an overview of our full range in our main 2023|2024 catalogue, which will now be published every two years. For some information we recommend checking our website which is updated daily. This includes new varieties, for which we could not guarantee availability at the time of printing as well as current availability of all our seeds.



Dear organic gardeners,

This catalogue of new varieties supplements our main 2023|2024 catalogue and gives us the opportunity to present additions and changes to our product range for the next season. You can look forward to 18 new varieties, 10 of which are organically and biodynamically bred. There's certain to be some that will make the perfect addition to your growing plan.

In less pleasant news, this summer the EU Commission submitted a draft to deregulate new genomic techniques, which largely conforms to the wishes of genetic engineering advocates and is unacceptable in many respects. We therefore need to show solidarity within the organic farming community, inform the general public and ensure that our freedom to choose agriculture and food without the involvement of genetic engineering will remain. On our homepage, we explain just how important this is. In Bingenheim, we will do everything we can to continue to offer organic, and therefore GMO-free seeds.

The past few years have demonstrated the ever-greater challenge presented by climate change to gardening in general, and to seed propagation especially. For this reason, it is important to research the observed changes in more detail and develop solutions to secure regional seed production in the long term. Ultimately, we only sell seeds that meet our high quality requirements.

Climate change is also a focus for organic and biodynamic plant breeding. As it isn't possible to equip an individual variety for all the challenges it may face, "organic heterogeneous material" appears to be a successful path to resilient cultures. Initial results, for example, with heterogeneous wheat populations, are confirming this. At present, we are working on a similar project with spinach and hope to be able to develop an excellent, resilient population in the next few years.

In an entirely different and pioneering breeding project we are looking at improving open-pollinated varieties of winter cauliflower. After overwintering outside, this gives you fresh organic vegetables in spring and offers multiple benefits: there's no need to heat for propagation and growing, transportation is minimal, and these plants can also benefit from the natural water available in winter.

Best regards on behalf of the whole
Bingenheim team

Petra Boie

Contents

Sales and advisory team	5
Novelties 2024	6
Explanation	12
What we offer you	13
Growing peppers and aubergines outdoors	14
No genetic engineering on our plates!	17
Sowing and planting calendar	18
Seed germination	19

Price list

Technically prepared seed & Changes to our products	20
---	----

Vegetables

Legumes	
Peas	21
French beans	21
Pole beans	21
Spaghetti bean	21
Broad bean	21
Edamame-Soybean	21
LegumeFix	21

Brassicas

Cauliflower	21
Broccoli	22
Chinese cabbage/ Pak Choi	22
White cabbage	22
Red cabbage	23
Savoy	23
Brussels sprouts	23
Kohlrabi	23
Curly kale	24
Turnip	24
Swede turnip	24

Roots and tubors

Radish	24
Winter radish	25
Salsify	25
Beetroot	25
Carrots	25
Parsnips	27
Parsley root	27
Celeriac	27
Pascal celery	28
Florence fennel	28

Leaf vegetables and salads

Spinach	28
New Zealand spinach	28
Malabar spinach	28
Spinach beet	28
Rocket	29
Wild rocket	29
Bucks Horn Plantain	29
Namenia	29
Chinese leaves	29
Cress	29
Corn salad	29
Winterpurslane	29
Butterhead Lettuces	30
Iceberg	30
Batavia	30
Cos lettuce	30
Oak leaf lettuce	30
Leaf lettuce	31
Baby Leaf	31
Endive	31
Chicory Sugarloaf	31
Chicory	31

Fruiting vegetables

Squash	32
Ournamental gourd	32
Melons	32
Ridge cucumbers	32
Salad cucumbers	32
Courgette	33
Pepper	33
Tomatoes	34
Aubergine	35
Physalis	36
Sweet corn	36

Onion family

Leeks	36
Seed strips	36
Onions	36
Bunching onion	37

Onion sets and garlic gloves

Onion sets	37
Winter onion sets	37
Garlic	37

Green manures

Green manure mixtures	38
-----------------------	----

Herbs

Seed discs for pot herbs	39
--------------------------	----

Flowers

Summer flowers	40
Ornamental grass	42
Summer flower mixtures	42

General Terms and Conditions

	43
--	----

Order sheet

	47
--	----

Our sales and advisory team for professional growers

Our professional growers team is available for any questions you may have about growing our open-pollinated varieties professionally as well as propagating and cultivating biodynamic seeds and vegetables.

In these constantly changing times, we would like to offer you ongoing expert support and advice. We have set up a new email address, so that you can send your questions directly to our experts. Our customer service and external sales colleagues can then pool their technical expertise and answer your questions quickly.

Here's the email address to contact our team of advisors directly: beratung@bingenheimersaatgut.de



Ruth Dettweiler
+49 (0) 152 53019132



Jörg Schlösser
+49 (0) 6035 1899-37



Klaus Kopp
Freelancer
+49 (0) 171 4428542



Maria Voehringer
*Consulting Netherlands,
Belgium*
+49 (0) 6035 1899-21

Bingenheimer Saatgut AG

Kronstraße 24 | 61209 Echzell-Bingenheim | Germany
Phone: +49 (0) 6035 1899-0 | Fax: +49 (0) 6035 1899-40

We are reachable by telephone:

Monday to Thursday from 9 am-4 pm | Friday from 9 am-1.30 pm

In July and August Monday to Friday from 9 am-1.30 pm

E-Mail: info@bingenheimersaatgut.de | Onlineshop: www.bingenheimersaatgut.de/en

Novelties 2024

Scheduled to be available in our
online shop in January 2024

Variety for all your needs



With our new products for the 2024 growing season, we want to offer more than a wide range of species and varieties, we also want to offer useful applications. From varieties for processing to specialities for direct selling and seedlings to sell to hobby gardeners to an abundance of flowers not just for the cottage garden. During the course of last year, we started to offer individual varieties in our online shop. We also plan to offer further new products online in January 2024.



Broccoli



G820

Linie 531

H. P. Christiansen



Being tested. Seed for trialling. Medium-early broccoli with heavy, firm heads and strong stalks. Medium sized beads and well-domed heads. Relatively narrow harvesting window, high yielding potential. Low tendency for developing hollow stalks. Recommended for autumn cropping. Approx. 62 days to maturity. Pleasant mild aromatic flavour.

Winter radish



G815

Rettmann

H. P. Christiansen

A long, slim Japanese radish (Minowase type) for the entire outdoor growing season, especially for early cropping. Around 30–40 cm in length, smooth-skinned and snow white. Pleasant very mild taste.

As with most of our varieties, Rettmann has been tested in various plant nurseries before being included in our range. Positive feedback included the low tendency to bolt and good storage suitability.



Beetroot



G788

Rs-Rü-01.22

U. Kirchgaesser

Being tested. Seed for trialling. A white beetroot with round beets, a smooth skin and moderate leaf base and growth. Few side roots and healthy leaves. Well suited as a complement in colourful beetroot-bunches. A pleasant and sweet taste, also good for eating raw.



Carrots



G795

MOG-SG-104

H. P. Christiansen

Being tested. Seed for trialling. An early, smooth-skinned summer carrot with upright-growing, firm and healthy foliage. Uniform, slender carrots with approx. 90-95 days to maturity. Particularly suitable for bunching carrots.



G803

Ronka

D. Bauer

A new variety in the Rodelika segment with improved yield potential, especially suitable for processing. Strong, somewhat thicker carrots, with robust, healthy leaves and slightly faster early growth than Rodelika. Mild aromatic taste and a high Brix value.



Squash



G812
Bush Delicata
b-d EHZ

A bush-type squash with only a slight trailing tendency. It has small, long-shaped fruits that grow close to the main stem like courgettes. Beige-green striped edible skin and light orange flesh. Healthy, vigorous plants with a high yielding potential. Particularly good flavour reminiscent of chestnuts.

Speciality for amateur gardeners.



Courgette



G818
Inizia
F. Kanso  bioverita

Being tested. Seed for trialling. Dark green, cylindrical courgettes with uniform relatively long fruits for growing outdoors. Fast-growing, healthy plants. Early to mature and continuous production. Early-maturing and even regrowth of young leaves. Relatively high yielding potential. Easy to harvest as the plants grow with an open habit.



Malachita and Inizia are two additional courgette varieties that are organically bred and new to our range. Malachita and the yellow Solara from our cover image come from the breeding work performed by Kornelia Becker.



Kornelia Becker in the courgette breeding field



G823
Malachita
K. Becker 

Being tested. Seed for trialling. Low, open-growing courgette with light green striped fruits that can be easily harvested by twisting off the plant. Early maturing and relatively homogeneous. Pretty fruit shape, quite compact, smooth-skinned and very uniform. Stores well after harvest. Highly robust to powdery mildew.





Pepper

Growing paprika outside is a good way of expanding your own offerings beyond the often limited protected growing area. Please note the important considerations mentioned in our editorial on page 14.



G810

Resi

b-d EHZ

A very sturdy outdoor pepper, a red-fruited Bullhorn pepper that bears plenty of fruit. Thick fleshed, heavy fruits that can be easily picked off the plant. High yielding potential. Fruits weigh around 200 g. Very healthy, robust and vigorous medium-early maturing. Juicy fruits with mild flavour.



Leeks



G794

Prelat

V. Becher

A very early summer leek with thick, heavy shafts and upright leaf habit. Relatively dark-coloured leaves. Highly marketable yields and easy to clean.



Autumn garlic cloves

Autumn planting material

Order period: May till August
Delivery period:
Middle till end of September
Limited quantity – only available
while stocks last.



G785

Thüla

S. Lange

Late maturing autumn garlic with medium sized cloves and very good storage capacity. The external skin of the bulb is white with pale brown markings. 11 to 15 cloves per bulb with tightly sitting clove membrane. Pleasant rounded flavour with a spiciness that suits raw consumption and with a juicy consistency.

Thüla originates from the years of selection of the variety Thüringer Landsorte and was not obtained by meristem culture. It is therefore ideal for the development of individual farm varieties as Thüla is shown to be very stable in reproduction. Select bigger garlic cloves for reproduction. Drying in shade as whole plant is recommended.



Green manures



D470
Common flax 'Lirina'

Linum usitatissimum
Very sturdy flax with delicate, sky-blue flowers. Early and long-lasting flowering period. Very healthy plants. High oil content. Heat-loving plant with vigorous taproot, specially interesting for summer mixtures. Sowing depth 1-2 cm.



Herbs



K97
White catnip

Nepeta cataria ssp. citriodora
White-flowering sub-species of catmint with an intense citrus fragrance. In contrast to lemon balm, it also dries well for tea. Particularly attractive to insects. An old cottage garden plant that thrives in loamy soil. Frost-hardy perennial.



Summer flowers



B654
Korean mint

Agastache rugosa
Korean mint, with its vibrant purple-blue flower spikes, attracts bees, bumblebees and butterflies to the perennial border. The entire plant exudes an aromatic scent reminiscent of mint and licorice. Agastache leaves can be used fresh or dried for a delicious tea. It is perennial and tolerant to drought.





B644

Hollyhock 'Lene'

S. Lange

Althaea rosea

Hollyhock 'Lene' is special because it's an annual summer flower. Beautiful and large flowers in shades of pale and dark pink and white. The plants grow to 1.8 m and are very sturdy. We recommend sowing early indoors by mid March for an abundance of flowers.



demeter



B645

Sweet alyssum

Lobularia maritima

Sweet Alyssum is a low-maintenance plant for filling out borders that also thrives at dry sites. Noticeable for its scent reminiscent of honey. Particularly attractive to hoverflies. Cutting back the plants by half after the first flush of blooms can encourage a second flowering.



demeter

Bioland



Summer flower mixtures



B633

Phlox 'Märchenzauber'

b-d EH2

Phlox drummondii

This annual phlox is a wonderful border and patio plant with a long flowering period and compact growth. It serves particularly well to bring colour between rows of vegetables. The colour range of this mixture is magical. The flowers always have a dark centre. The scent is reminiscent of lilac combined with sweet melon.



demeter



B640

Cottage garden mix

This vigorous mix contains many colourful cottage garden flower classics: corncockle (white and purple), coreopsis, annual chrysanthemum, cosmos, cornflower and dill. Provides nectar and pollen for many insects. Regular cutting for flower arrangements encourages more flowers. Note: All parts of the corncockle plant are poisonous.



Valuable Background Information and further explanations

Organic seed producers and growers associations

Our entire seed range is made up exclusively of open pollinated varieties. The seeds offered have been, without exception, organically produced. Most producers are also certified by one of the organic growers associations (for example Demeter or Bioland). The symbols indicate which one the seed producer is affiliated to.



Key of symbols

- Suitable for open ground cultivation
- Annual
- Perennial
- Cut flower
- Balkony
- Isolated stand
- Good for insects and bees
- Edible blossom
- Scent plant

Breeding



New biodynamic varieties are designated with the symbol of Kultursaat e. V. along with the name of the plant breeder.



New organic varieties (bred on Bioland certified farms) are designated with the Saat:gut logo and the name of the plant breeder.



The quality label of the European umbrella organisation bioverita indicates varieties that have been bred under organic or biodynamic conditions according to the principle – organic from the start.

Maintenance breeding

If a variety has no named breeder it is a variety that is no longer protected but which is grown and maintained by members of the Biodynamic and Organic Seed Initiative Group. If the maintenance breeding is carried out on biodynamic land it will be indicated with the abbreviation **b-d EHZ**.

Amateur garden speciality

At the end of some variety descriptions you will find the following statement: “Speciality for the amateur gardener” These varieties are either old favourites or particularly suited to growing on the patio or balcony or in the backyard garden. They are of limited value to the commercial grower.



What we offer you

Growing range of varieties for organic cultivation

- Extensive product range focused on vegetables, herbs and flowers
- Emphasis on new biodynamic and organically bred varieties
- Complemented by established, traditional varieties
- Variety development with the goal of flavourful and resilient varieties for organic cultivation
- Testing of varieties for economic viability
- Varieties are a cultural asset: 100 % open-pollinated varieties – no hybrids, patents or genetic engineering



Specialist advice and customer-focused order fulfilment

- Quick and reliable delivery of orders
- Expert advice in response to questions about varieties and growing
- Information regarding availability of all varieties in our online shop is updated daily

Organic and collaborative seed cultivation

- Regionality: Seeds are produced in Germany and surrounding countries
- Sustainable, collaborative economic structures and fair pricing with breeders, propagators and customers
- Variety development payment: committed support for organic maintenance breeding and the breeding of new varieties as a percentage of the seed price



Premium seed grades for the requirements of professional growers



- High germination rates, good vigour and health
- Our own minimum standards which are above the legally required germination rates
- Wide range of seed types: precision seeds, calibrated seeds, pellets, seed strips & discs
- 100 % organically propagated seeds

Growing peppers and aubergines outdoors

On most farms, protected growing space is rather scarce and in summer the crop rotation in the greenhouse is dominated by nightshades. These are good reasons to grow peppers, chilli peppers and aubergines outdoors. Moreover, outdoor cultivation of fruiting vegetables is done as extensively as possible and thus saves working hours. However, as these are heat-loving and demanding plants, horticultural care should be taken with regard to location, choice of variety and cultivation.

Sowing under cover

When sowing under cover, it is important to provide a particularly warm plant raising environment where the seedlings and young plants can sit for a longer period of time.

It is beneficial if the substrate contains sufficient air in the soil pores. Therefore, it must not be too compacted and always be kept moderately moist. Supplementary lighting has a positive effect on plant development, especially in early cultivation.

About three weeks after sowing, the plants are pricked out at the cotyledon stage. They can be planted deeper than before (until the cotyledons rest on the soil) so that as many lateral roots as possible can develop. This increases the availability of nutrients and water on the one hand, and stabilises the plants on the other.

It is not required to use grafted plants for outdoor use, as fewer crop rotation diseases occur here and it would therefore make the young plants unnecessarily expensive.

Before planting out, the plants should be hardened off for about a week.

For peppers and chilli peppers, about 50 to 70 days must be planned for cultivation (depending on the variety and growing conditions). As these crops require a lot of heat, the growing environment should always be kept warm, especially when raising young plants. Recommended temperatures are: germination phase 26 to 28 °C (approx. 4 to 5 days), then the tem-

perature can be slowly lowered to 24 to 25 °C over the course of one week and then to 20 to 22 °C after pricking out.

Depending on the variety of aubergines, the raising of the young plants need about 60 to 80 days. They also need a warm place to germinate. Later it can be a little cooler (18 - 21 °C).

Location, soil and fertilisation

Deep and medium-heavy soils that are rich in humus, are well suited for these three crops. The soil should warm up quickly and not tend to become waterlogged. Depending on the condition of the soil, deep loosening (with or without green manure) is recommended.

Fertilisation should be rich in potash. Depending on the soil content, fertilisation with mature compost as well as N- and K-emphasised fertilisers is advisable.

For planting around the beginning to end of May, depending on the region and weather, the soil should already be warmed up. If the soil temperature is above 20 °C, the plants will continue to grow. If the plants are planted in soil that is too cool, growth will stagnate. A black fabric ground cover increases the warming up of the soil and thus offers an advantage especially for the heat-loving nightshades. If you would rather mulch organically, you should only mulch when the soil is already warm. Otherwise the mulch will have an additional insulating effect and will prevent the warming up of the soil.



Snack pepper Flynn [G721] in open-air cultivation

Cultivation and routine care

Depending on the variety and vigour, peppers, chili peppers and aubergines can be grown outdoors without any support at all, by staking or (rather rarely) cultivating in a “Spanish” trellis system. Support is often recommended for large-fruited varieties, as otherwise shoots can break or whole plants can topple over.

In the “Spanish” trellis system, posts are set for one row at a distance of 5 to 6 m and then strings are stretched to the left and right along the plants as a sort of trellis. To keep the strings together, they can be clipped in the middle or fixed with a special string holder. When staking, thicker bamboo sticks can be placed close to the plant and far into the ground.

In order for peppers to develop into a beautiful and strong plant, at least the crown flower in the first fork should be removed at the beginning of the cultivation. For smaller and weaker plants, it is recommended to remove more flowers (3 to 5). A nice strong and stable plant should have developed before fruiting.

Irrigation should be even and cover the entire cropping area. On very sunny days, watering can also be done from above. However, the plants should go into the night being dry.

Varieties

In recent years, snack peppers have become more and more interesting for outdoor cultivation, mainly because they require little routine care. The orange, thick-fleshed variety **Flynn** [G721] and the yellow, thin-fleshed pepper **Radja** [G720] are classic snack peppers of 7-8 cm length. The red variety **Fritz** [G740] has a slightly larger fruit with a length average of 10-12 cm. The varieties **Ferenc Tender** [G309A], **Pusztagold** [G306] and **Sweet Dreams** [G303B] are also well suited for outdoor cultivation. They ripen early to medium early and can also be harvested and eaten when still yellow and not yet entirely ripened. Since the growing season 2023, we have also been offering the variety **Resi** [G810], a red-ripening Bullhorn type with abundant fruit set. A speciality is the high growing pepper **Padron** [G755], its fruits should only be harvested green for frying with a maximum length of 5 cm. Larger fruits can become very hot.

We also have some chili peppers for outdoor cultivation with different fruit shapes and a range of heat. We recommend the cultivation especially in sunny and warm locations. As a red, thick-walled chili pepper, the variety **Jalapeno Ruben** [G657] with mild heat and decorative corking on the red fruits is suitable for growing outdoors. The variety speciality **Red Gunda** [G804] is particularly striking in its growth habit, as the numerous 7 to 12 cm long red fruits grow as upright clusters on the plants. These are particularly spicy, ranging at a 7 on a scale of 10 heat points and are very suitable for



Aubergines during cultivation trials for new varieties

drying. The variety **Gelbes Rüsselchen** [G778] is characterised by its sunny yellow, bent fruits of approx. 10 g. In addition, the abundant fruit bearing Habanero **NuMex Suave** [G777] is also suitable for outdoor cultivation. Its fruits are bright yellow and have a very mild, fruity flavour. All these varieties are stable and usually do not need any support (except the variety **Gelbes Rüsselchen**). Deep planting, mounding and mulching contribute to good stability. However, at stormy sites with strong gusts or in some gardens with a self-harvesting concept for the members, we recommend the “Spanish” trellis system outdoors.

So far, we have three varieties of aubergines. Apart from the dark purple variety **De Barbentane** [G681], which requires trellising and is more suited for the amateur gardeners, the varieties **Zora** and **Lea** are well suited for outdoor growing. **Zora** [G641] is a typical commercial variety with elongated-oval, dark purple fruits, whereas **Lea** [G780] with its purple-white streaked round fruits is a speciality. The plants of **Lea** are stockier in growth and have a lower yield potential. This variety is particularly flavoursome and well suited when you marked a broad range of variety specialities.

As we have registered a great interest in aubergines for outdoor cropping in recent years, we are currently conducting variety trials to expand our range for commercial farms. Thus, we are confident to be able to offer some attractive and suitable varieties in the near future.

Plant health

To keep the roots healthy, it is important to have loose and structurally stable soil that drains well and is nicely warmed up.

Sunburn is a big issue in summer when growing peppers. Not easy to distinguish from sunburn is blossom end rot (local calcium deficiency), which can occur if irrigation is too scarce and uneven.

Aubergines should be kept rather dry at the beginning of cultivation so that they develop a better root system.

This also prevents the occurrence of fungal diseases. Watering can then be increased at the beginning of fruit set.

Peppers and aubergines are unfortunately quite popular with various insects of the family Pentatomidae (stink bugs). Since netting is often difficult to apply outdoors, a colourful flowering strip can be used as a distraction. Especially against the southern green shield bug (*Nezara viridula*), beneficial insects are available for purchase. Aubergines are also very popular with potato beetles, so better do not grow them after or next to potatoes.

Both peppers and chili peppers as well as aubergines come in a wide variety of colours and shapes.

Harvest and storage

Depending on the variety and weather conditions, it takes 6 to 14 weeks from planting to harvesting. In order to get a more even harvest and to prevent exhausting the plant in production, a green harvest is often carried out once or twice at first. Therefore, some of the fruits are being harvested unripe if the early fruit production is too bountiful. As a rough rule of thumb, it takes about three weeks from green to full ripeness.

Aubergines are harvested when they are half ripe. The skin should still be shiny and the seeds inside should still be soft and white.

Harvesting is usually done twice a week with secateurs or a knife.

Aubergines and peppers should be stored at around 8 to 10 °C. Green peppers can be stored a little longer than fully ripe ones. Peppers are very sensitive to ethylene.

Depending on the weather throughout the growing season, yields of both crops can vary greatly in different years. Apart from yield, quality and taste, the cost of cultivation and the price for the young plants is an important aspect when taking the decision to grow these nightshades.

Both peppers and chili peppers as well as aubergines come in a wide variety of colours and shapes. Therefore, it is worthwhile to bring some diversity into your vegetable product range in order to find the right varieties for your individual farm and vegetable marketing concept.



An example of cultivating peppers using the “Spanish” trellis system in the cooperative farming project “Der Feldgarten”



Aubergine Zora [G641]



No genetic engineering on our plates!

On 5 July 2023, the EU Commission submitted a draft to deregulate new genomic techniques. This largely takes into account only the economic interests of the agricultural industry and genetic engineering advocates and violates the right to our freedom to choose a GMO-free diet.

99 % of crop production in the EU is still free from genetic engineering. However, should the latest proposal of the EU Commission be passed, this could soon change.

New genetic engineering techniques must not be used without assessing the risks and must not be sold without clear product labelling. In addition, the modified genes could spread unchecked across fields, in gardens and in nature.

Together with eleven other organic seed companies, we definitely say NO to this draft proposal:

Organic Seed Companies Say No to the Planned Deregulation of New Genetic Engineering

The EU Commission is planning extensive deregulation of new genetic engineering aka New Genomic Techniques (NGT) and presented its proposal on 5 July 2023. This proposal has far-reaching consequences for everyone, even if cultivation of NGT varieties won't be allowed in organic farming.

This deregulation makes it much more difficult to maintain the diversity of varieties that exist, to propagate organic seeds and to breed organically. The increasing number of patents will hinder organic breeding and lead to major problems.

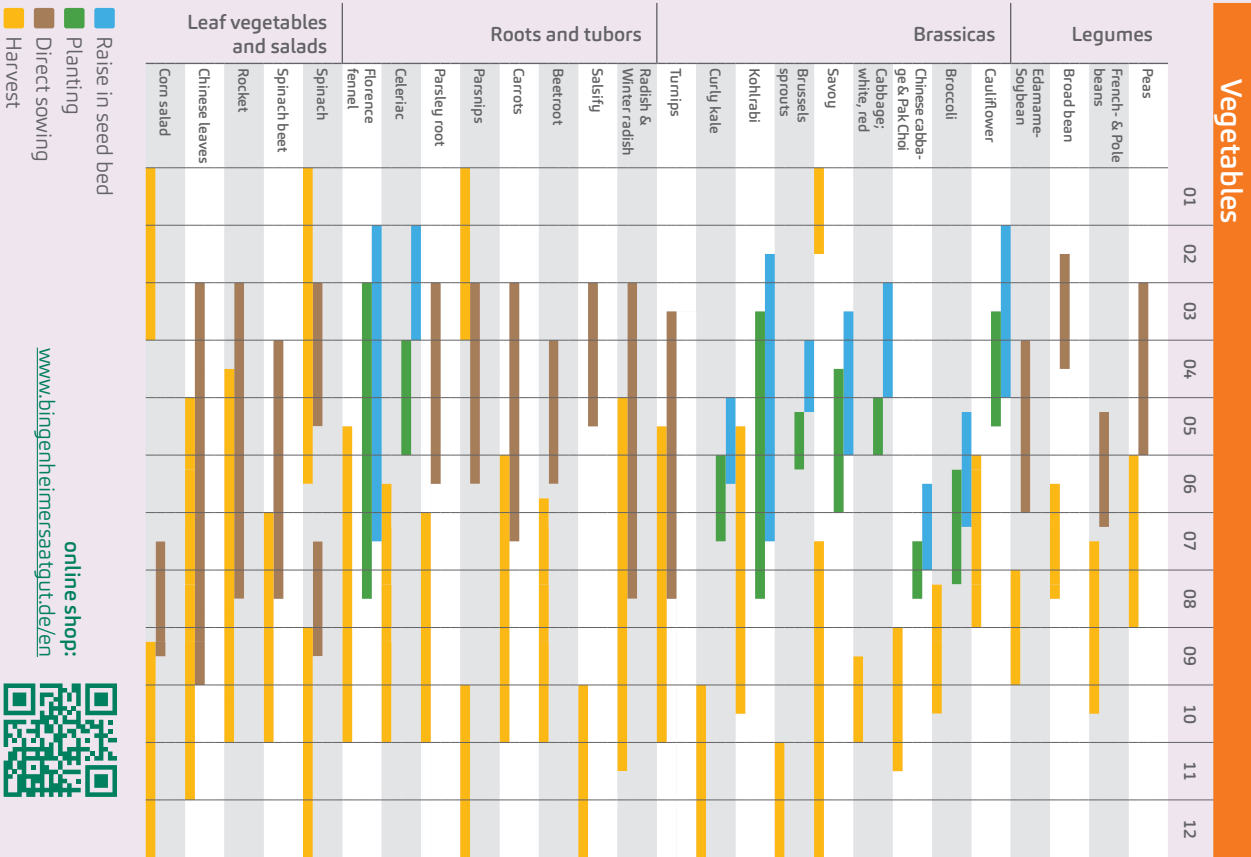
The great challenges we are facing today (climate change, energy supply, preservation of our livelihoods and many more) require holistic solutions. The supposedly rapid change of a few base pairs in the genome will not suffice and the potential of NGT is usually completely overestimated.

The undersigned organic seed companies firmly reject these plans. They endanger the diversity of varieties and in particular have negative effects on plant breeding in general and organic breeding in particular.

We will not be diverted from our path. Although these plans will result in additional costs for us as organic seed companies, we will do everything we can to protect the varieties and seeds we offer from contamination and continue to offer the best quality organic seeds.

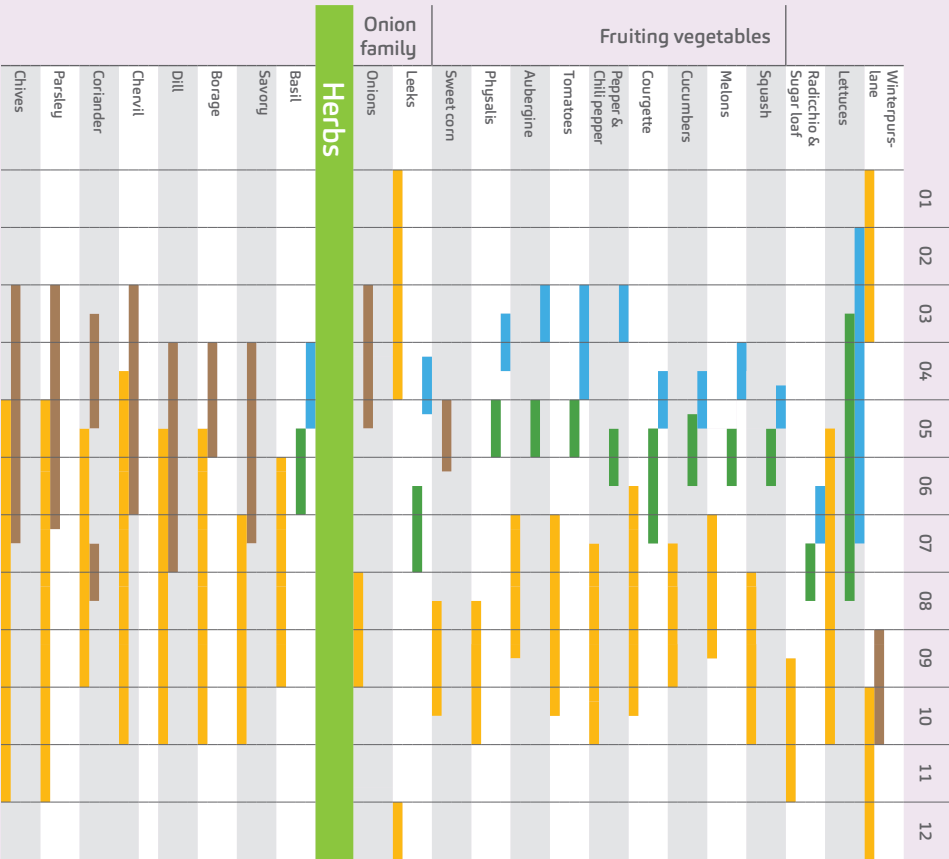
AGROSEMENS (France) | Bingenheimer Saatgut AG (Germany) | Bioland Handelsgesellschaft Baden-Württemberg mbH (Germany) | BioSaat GmbH (Germany) | Culinaris (Germany) | De Bolster Organic Seeds (Netherlands) | Essem'Bio (France) | Lebende Samen e.V. (Germany) | ÖkoKornNord w.V. (Germany) | Reinsaat GmbH (Austria) | Sativa Rheinau AG (Switzerland) | Living Seeds International AG/ Sementes Vivas SA (Portugal)

Sowing and planting calendar



- Raise in seed bed
- Planting
- Direct sowing
- Harvest

online shop: www.bingenheimersaatgut.de/en



Growing periods always depend on the variety. For instance, sowing and cropping may differ from this table for individual varieties because this information always refers to the vegetable species or family as a whole. Let's take spinach as an example: In comparison with other varieties, the spring spinach variety Gammason is not suitable for autumn growing. You can find growing information specific to each variety in our online shop.

How long are the seeds able to germinate?

The length of time seeds are able to germinate depends on the type of vegetable, although storage conditions are also a deciding factor for maintaining optimal seed viability!



Lettuces

Butterhead, cut and come again lettuce, Endive, Chicory Sugar loaf & Corn salad
2-3 years



Cucumbers, Squash & Courgette

4-5 years



To ensure the species-specific germination capacity is retained, dry seeds should be stored in a cool and dark place, and packaged so that they are as airtight as possible e.g. in sealed jars or a dark tin.



Carrots

4-5 years



Sweet corn

4-5 years



Brassicas

Broccoli, Cauliflower, Kohlrabi, Brussels sprouts and others
4-5 years

Parsnips

A few months up to 1 year



Radish

More than 5 years



Beans & Peas

4-5 years



Onions & Leeks

4-5 years



Spinach

4-5 years



Spinach beet & Beetroot

More than 5 years



Pepper, Tomatoes & Aubergine

More than 5 years



In Bingenheim, our seeds are usually stored at 16 °C and at approx. 35 % humidity or 12 °C and 30 % humidity for more sensitive species.



In most cases, seeds from the previous year can still be used – if they have been stored properly.

Technically prepared seed

In addition to normal seed, we offer various technically prepared seed forms for easier sowing and plant raising or better and more even germination. In the subsequent price section, all varieties are listed with the respective forms offered. For a quick overview and up-to-date information on the availability of individual forms, please refer to the respective lists in our online shop: www.bingenheimersaatgut.de/en/prepared-seed

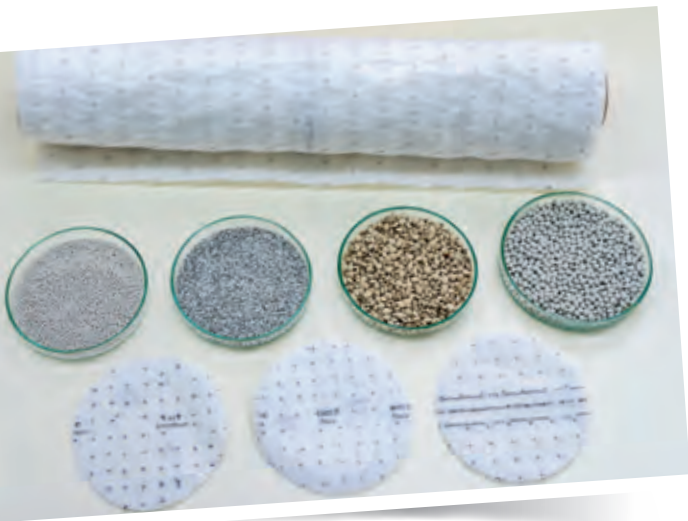
Normal seed: The seed is cleaned and tested to meet all legal requirements as well as our own high quality standards.

Precision seed: The seed has a higher germination capacity than normal seed. The minimum germination rate for precision seed is set according to variety.

Variety	Germination capacity (at least)
Aubergine	90 %
Chicory	90 %
Corn salad	90 %
Salad cucumbers	95 %
Habanero	85 %
Hokkaido (red)	95 %
Brassicas	90 %
Florence fennel	85 %

Variety	Germination capacity (at least)
Squash	90 %
Melons	90 %
Carrots	85 %
Pepper	90 %
Leeks	85 %
Radish & Winter radish	90 %
Beetroot	85 %
Tomatoes	90 %
Courgette	90 %
Sweet corn	85 %
Onions	90 %

You will find the germination rate of the lot on the packaging.
Precision seed is not available in portion bags.



Calibrated seed: For a good and precise single grain seeding, the seeds are sorted according to size (calibrated). We generally offer three sizes of seed S (small), M (medium) and L (large).

Primed seed: Priming, or pre-sprouting, is a valuable procedure to speed up seed germination and make it more even. The aim of priming is to ensure the performance of the seed. This includes first and foremost its readiness to germinate and the successful juvenile development of the plants under all growing conditions (even non-optimal ones).

Bingenheimer Saatgut AG is working on the priming and pelleting of seeds with a company whose processing procedures are certified under the EU Organic Regulation and which has many years of experience in this field. Depending on the plant species, we offer both normal seeds and pelleted primed seeds.

Pelleted seeds: The seed is encased in a pellet (clay). This gives each seed the same size and form - very useful when planting seeds singly. The pellet is naturally made and completely free of all chemicals and meets the obligations of VO (EU) 2018/848.

Seed strips/plates & discs: Seed is laid out at defined distances between two sheets of special paper. Among other products, we offer seed plates for the professional cultivation of leeks and various seed discs for potted herb cultivation.

Portion bag: There are portion bags of each variety suitable for the home gardens. Non-calibrated seeds are bagged. The content is sufficient for the common amateur gardener's needs. The price list indicates the approximate growing area or number of plants to be expected from a portion bag for each variety.

Changes to our products for 2024

The following varieties have left our product range:

Species	Variety	Replacement
Lettuce	Maikönig G363	
Lettuce	Zulu G636	Briweri G359

We cannot supply the following varieties in the 2024 growing season:

Species	Variety
Florence fennel	Fino G190
Green manures	Birds Foot Trefoil D521
Herbs	Russian tarragon K51
Herbs	Sweet marjoram K45

The availability of all varieties and the technical seed types (precision seeds, calibrated etc.) can be found in our online shop and is updated daily.

Peas										Net prices in €
Item no.	Variety	Portion	suffice for	250 g	500 g	1 kg	2.5 kg	5 kg	10 kg	25 kg
G150	Kleine Rheinländerin	3.04	100 PL	9.10	15.40	26.40	58.00	106.00	198.00	467.00
G775	Blauwshokker	3.04	75 PL	13.70	22.80	40.90	89.90	167.00	305.00	729.00
G155	Wunder von Kelvedon	3.04	100 PL	9.10	15.40	26.40	58.00	106.00	198.00	467.00
G156	Ambassador	3.04	100 PL	9.10	15.40	26.40	58.00	106.00	198.00	467.00
G161	Ambrosia	3.04	100 PL	10.60	17.80	30.80	68.00	125.00	229.00	549.00
G676	Sweet Horizon	3.04	75 PL	13.70	22.80	40.90	89.90	167.00	305.00	729.00

French beans										Net prices in €
Item no.	Variety	Portion	suffice for	100 g	250 g	500 g	1 kg	2.5 kg	5 kg	10 kg
G120	Saxa	3.04	50 PL	6.70	14.10	23.90	42.00	94.00	169.00	302.00
G124	Marona	3.04	50 PL	6.70	14.10	23.90	42.00	94.00	169.00	302.00
G125	Maxi	3.04	50 PL	7.10	14.60	24.90	43.50	98.00	176.00	317.00
G716	Brigit	3.04	60 PL	8.10	16.80	28.90	50.50	114.00	204.00	368.00
G627	Domino	3.04	60 PL	6.70	14.10	23.90	42.00	94.00	169.00	302.00
G128A	Cupidon	3.04	50 PL	9.20	18.90	31.00	55.00	123.00	221.00	408.00
G129	Caruso	3.04	60 PL	8.10	16.80	28.90	50.50	114.00	204.00	368.00
G146	Sanguigno 2	3.04	30 PL	6.70	14.10	23.90	42.00	94.00	169.00	302.00
G132	Helios	3.04	40 PL	8.10	16.80	28.90	50.50	114.00	204.00	368.00
G147	Purple Teepee	3.04	40 PL	7.10	14.60	24.90	43.50	98.00	176.00	317.00

Pole beans (Climbing French beans)										Net prices in €
Item no.	Variety	Portion	suffice for	100 g	250 g	500 g	1 kg	2.5 kg	5 kg	10 kg
G133	Trebona	3.04	30 PL	9.30	19.10	32.50	57.00	129.00	233.00	425.00
G622	Helda	3.04	30 PL	9.30	19.10	32.50	57.00	129.00	233.00	425.00
G647	Cobra	3.04	30 PL	9.30	19.10	32.50	57.00	129.00	233.00	425.00
G136	Neckarkönigin	3.04	30 PL	9.20	18.90	31.00	55.00	123.00	221.00	408.00
G723	Golden Gate	3.04	30 PL	9.30	19.10	32.50	57.00	129.00	233.00	425.00
G139	Neckargold	3.04	40 PL	9.20	18.90	31.00	55.00	123.00	221.00	408.00
G139A	Brunhilde	3.04	40 PL	9.20	18.90	31.00	55.00	123.00	221.00	408.00
G139B	Preisgewinner	3.04	20 PL	9.20	18.90	31.00	55.00	123.00	221.00	408.00

Spaghetti bean										Net prices in €
Item no.	Variety	Portion	suffice for	25 g	50 g	100 g	250 g	500 g	1 kg	
G699	Canetti	3.04	30 PL	7.50	12.20	19.90	40.90	70.50	126.00	

Broad bean										Net prices in €
Item no.	Variety	Portion	suffice for	250 g	500 g	1 kg	2.5 kg	5 kg	10 kg	25 kg
G672	Ratio	3.04	25 PL	7.90	13.60	23.50	53.00	95.00	171.00	402.00
G142	Frühe Weißkeimige	3.04	25 PL	7.90	13.60	23.50	53.00	95.00	171.00	402.00
G140	Hangdown grünkernig	3.04	25 PL	7.90	13.60	23.50	53.00	95.00	171.00	402.00

Edamame-Soybean										Net prices in €
Item no.	Variety	Portion	suffice for	250 g	500 g	1 kg	2.5 kg	5 kg	10 kg	25 kg
G724	Green Shell	3.04	60 PL	7.80	15.80	26.90	47.40	106.00	186.00	339.00
G805	Hokkai Green	3.04	60 PL	7.80	15.80	26.90	47.40	106.00	186.00	339.00
Z045	LegumeFix small	3.04	Suffice for inoculation of ca. 5 Edamame-Portions or 150 g Edamame Seeds.							
Z046	LegumeFix big	4.10	Suffice for inoculation of ca. 1 kg Edamame Seeds.							

Cauliflower										Net prices in €
Item no.	Variety	Portion	suffice for	2 g	5 g	10 g	25 g	50 g	100 g	250 g
G199	Odysseus	3.04	35 PL	18.40	38.30	62.00	129.00	229.00	429.00	1,020.00
G697	Amabile	3.04	40 PL	22.80	46.40	75.50	158.00	274.00	509.00	1,220.00
G201	Neckarperle	2.71	40 PL	15.30	31.60	51.00	107.00	189.00	351.00	839.00
G203	Tabiro	3.04	30 PL	22.80	46.40	75.50	158.00	274.00	509.00	1,220.00

Cauliflower										Net prices in €
Item no.	Variety	Portion	suffice for	2 g	5 g	10 g	25 g	50 g	100 g	250 g
G700	Daniel	3.04	30 PL	22.80	46.40	75.50	158.00	274.00	509.00	1,220.00

Precision seed: size S: 1.75-2.00 mm; size M: 2.0-2.25 mm

Item no.	Variety	Grain	500 gr	1,000 gr	2,500 gr	5,000 gr	10,000 gr	25,000 gr	50,000 gr
G199 S/M	Odysseus		22.60	37.40	78.90	137.00	234.00	539.00	1,030.00
G697 S/M	Amabile		27.60	45.90	96.90	167.00	282.00	649.00	1,230.00
G203 S/M	Tabiro		27.60	45.90	96.90	167.00	282.00	649.00	1,230.00
G700 S/M	Daniel		27.60	45.90	96.90	167.00	282.00	649.00	1,230.00

Broccoli										Net prices in €
Item no.	Variety	Portion	suffice for	2 g	5 g	10 g	25 g	50 g	100 g	250 g
G643	Calinaro (AS)	3.04	30 PL	15.10	30.90	50.40	104.50	185.00	344.00	824.00
G717	Rasmus	3.04	30 PL	15.10	30.90	50.40	104.50	185.00	344.00	824.00
G820	New! Linie 531 (AS)	3.04	30 PL	15.10	30.90	50.40	104.50	185.00	344.00	824.00

Precision seed: size S: 1.75-2.00 mm; size M: 2.0-2.25 mm

Item no.	Variety	Grain	500 gr	1,000 gr	2,500 gr	5,000 gr	10,000 gr
G643 S/M	Calinaro (AS)		24.90	41.60	87.40	148.00	254.00
G717 S/M	Rasmus		24.90	41.60	87.40	148.00	254.00
G820 S/M	New! Linie 531 (AS)		24.90	41.60	87.40	148.00	254.00

Chinese cabbage / Pak Choi										Net prices in €
Item no.	Variety	Portion	suffice for	2 g	5 g	10 g	25 g	50 g	100 g	250 g
G240	Granat	2.71	80 PL	6.20	12.20	19.90	41.40	73.50	131.00	302.00
G771	Yorokobi	3.04	70 PL	7.90	16.10	26.70	55.90	99.50	177.00	404.00

Precision seed: size S: 1.75-2.00 mm; size M: 2.0-2.25 mm

Item no.	Variety	Grain	500 gr	1,000 gr	2,500 gr	5,000 gr	10,000 gr	25,000 gr	50,000 gr
G240 S/M	Granat		12.90	21.40	42.90	71.90	128.00	282.00	519.00
G771 S/M	Yorokobi		13.40	22.30	44.90	74.90	134.00	294.00	544.00

White cabbage										Net prices in €
Item no.	Variety	Portion	suffice for	2 g	5 g	10 g	25 g	50 g	100 g	250 g
G212	Eersteling	3.04	40 PL	13.10	27.30	45.90	99.90	177.00	319.00	749.00
G686	Berns	3.04	30 PL	13.10	27.30	45.90	99.90	177.00	319.00	749.00
G649	Nagels Frühweiß	3.04	30 PL	13.10	27.30	45.90	99.90	177.00	319.00	749.00
G215	Donator	3.04	30 PL	13.10	27.30	45.90	99.90	177.00	319.00	749.00
G216	Holsteiner Platter	2.71	40 PL	10.10	20.40	34.90	74.90	133.00	242.00	559.00
G645	Domarna	3.04	30 PL	13.10	27.30	45.90	99.90	177.00	319.00	749.00
G217	Filderkraut	2.71	40 PL	10.10	20.40	34.90	74.90	133.00	242.00	559.00
G218	Marwei (AS)	2.71	40 PL	10.10	20.40	34.90	74.90	133.00	242.00	559.00
G219	Dottenfelder Dauer	3.04	40 PL	13.10	27.30	45.90	99.90	177.00	319.00	749.00
G220	Türkis	2.71	40 PL	10.10	20.40	34.90	74.90	133.00	242.00	559.00
G221	Dowinda	3.04	40 PL	13.10	27.30	45.90	99.90	177.00	319.00	749.00

Precision seed: size S: 1.75-2.00 mm; size M: 2.0-2.25 mm

Item no.	Variety	Grain	500 gr	1,000 gr	2,500 gr	5,000 gr	10,000 gr	25,000 gr	50,000 gr
G212 S/M	Eersteling		20.10	32.90	68.90	119.00	216.00	484.00	899.00
G686 S/M	Berns		20.10	32.90	68.90	119.00	216.00	484.00	899.00
G649 S/M	Nagels Frühweiß		20.10	32.90	68.90	119.00	216.00	484.00	899.00
G215 S/M	Donator		20.10	32.90	68.90	119.00	216.00	484.00	899.00
G216 S/M	Holsteiner Platter		15.60	26.40	55.40	97.90	167.00	374.00	689.00
G645 S/M	Domarna		20.10	32.90	68.90	119.00	216.00	484.00	899.00
G217 S/M	Filderkraut		15.60	26.40	55.40	97.90	167.00	374.00	689.00
G218 S/M	Marwei (AS)		15.60	26.40	55.40	97.90	167.00	374.00	689.00
G219 S/M	Dottenfelder Dauer		20.10	32.90	68.90	119.00	216.00	484.00	899.00
G220 S/M	Türkis		15.60	26.40	55.40	97.90	167.00	374.00	689.00

(AS) = Amateur variety. Due to seed regulations, seeds only provided in small packaging units.
Further information on p. 42

Precision seed: size S: 1.75-2.00 mm; size M: 2.0-2.25 mm

Item no.	Variety	Grain	500 gr	1,000 gr	2,500 gr	5,000 gr	10,000 gr	25,000 gr	50,000 gr
G221 S/M	Dowinda		20.10	32.90	68.90	119.00	216.00	484.00	899.00

Red cabbage Net prices in €

Item no.	Variety	Portion	suffice for	2 g	5 g	10 g	25 g	50 g	100 g	250 g
G207	Amarant	2.71	40 PL	10.10	20.40	34.90	74.90	133.00	242.00	559.00
G209	Granat	2.71	40 PL	10.10	20.40	34.90	74.90	133.00	242.00	559.00
G210	Rodynda	3.04	30 PL	13.10	27.30	45.90	99.90	177.00	319.00	749.00

Precision seed: size S: 1.75-2.00 mm; size M: 2.0-2.25 mm

Item no.	Variety	Grain	500 gr	1,000 gr	2,500 gr	5,000 gr	10,000 gr	25,000 gr	50,000 gr
G207 S/M	Amarant		15.60	26.40	55.40	97.90	167.00	374.00	689.00
G209 S/M	Granat		15.60	26.40	55.40	97.90	167.00	374.00	689.00
G210 S/M	Rodynda		20.10	32.90	68.90	119.00	216.00	484.00	899.00

Savoy Net prices in €

Item no.	Variety	Portion	suffice for	2 g	5 g	10 g	25 g	50 g	100 g	250 g
G214	Vorbote 3	2.71	40 PL	10.10	20.40	34.90	74.90	133.00	242.00	559.00
G213	Smaragd	3.04	40 PL	13.10	27.30	45.90	99.90	177.00	319.00	749.00
G223	Winterfürst 2	2.71	40 PL	10.10	20.40	34.90	74.90	133.00	242.00	559.00

Precision seed: size S: 1.75-2.00 mm; size M: 2.0-2.25 mm

Item no.	Variety	Grain	500 gr	1,000 gr	2,500 gr	5,000 gr	10,000 gr	25,000 gr	50,000 gr
G214 S/M	Vorbote 3		15.60	26.40	55.40	97.90	167.00	374.00	689.00
G213 S/M	Smaragd		20.10	32.90	68.90	119.00	216.00	484.00	899.00
G223 S/M	Winterfürst 2		15.60	26.40	55.40	97.90	167.00	374.00	689.00

Brussels sprouts Net prices in €

Item no.	Variety	Portion	suffice for	2 g	5 g	10 g	25 g	50 g	100 g	250 g
G609	Idemar	3.04	40 PL	9.30	18.60	29.90	60.90	107.50	189.00	439.00

Precision seed: size S: 1.75-2.00 mm; size M: 2.0-2.25 mm

Item no.	Variety	Grain	500 gr	1,000 gr	2,500 gr	5,000 gr	10,000 gr	25,000 gr	50,000 gr
G609 S/M	Idemar		15.20	24.70	50.90	85.90	149.00	334.00	639.00

Kohlrabi Net prices in €

Item no.	Variety	Portion	suffice for	2 g	5 g	10 g	25 g	50 g	100 g	250 g
G227	Azur Star	3.04	50 PL	10.90	21.80	36.40	74.90	129.00	229.00	529.00
G228A	Lanro	3.04	40 PL	10.90	21.80	36.40	74.90	129.00	229.00	529.00
G229	Rasko	3.04	45 PL	12.90	25.60	42.40	86.90	149.00	269.00	619.00
G730	Fridolin	3.04	40 PL	12.90	25.60	42.40	86.90	149.00	269.00	619.00
G231	Orinoko	3.04	60 PL	10.90	21.80	36.40	74.90	129.00	229.00	529.00
G729	Enrico	3.04	40 PL	12.90	25.60	42.40	86.90	149.00	269.00	619.00
G232	Blaro	3.04	40 PL	10.90	21.80	36.40	74.90	129.00	229.00	529.00
G233	Blaril	3.04	60 PL	12.90	25.60	42.40	86.90	149.00	269.00	619.00
G230	Superschmelz	3.04	60 PL	9.10	17.90	29.40	62.90	106.00	187.00	429.00

Precision seed: size S: 1.75-2.00 mm; size M: 2.0-2.25 mm

Item no.	Variety	Grain	500 gr	1,000 gr	2,500 gr	5,000 gr	10,000 gr	25,000 gr	50,000 gr
G227 S/M	Azur Star		19.90	32.90	67.90	112.00	194.00	434.00	789.00
G228AS/M	Lanro		19.90	32.90	67.90	112.00	194.00	434.00	789.00
G229 S/M	Rasko		23.10	37.40	77.40	129.00	224.00	489.00	909.00
G730 S/M	Fridolin		23.10	37.40	77.40	129.00	224.00	489.00	909.00
G231 S/M	Orinoko		19.90	32.90	67.90	112.00	194.00	434.00	789.00
G729 S/M	Enrico		23.10	37.40	77.40	129.00	224.00	489.00	909.00
G232 S/M	Blaro		19.90	32.90	67.90	112.00	194.00	434.00	789.00
G233 S/M	Blaril		23.10	37.40	77.40	129.00	224.00	489.00	909.00
G230 S/M	Superschmelz		17.10	27.40	56.90	94.90	164.00	359.00	664.00

Net prices plus VAT currently applicable in the country of delivery

Curly kale										Net prices in €
Item no.	Variety	Portion	suffice for	2 g	5 g	10 g	25 g	50 g	100 g	250 g
G225	Halbhoher grüner Krauser	2.71	80 PL	4.10	7.70	12.10	24.90	42.10	71.90	164.00
G226	Westländer Winter	2.71	80 PL	4.10	7.70	12.10	24.90	42.10	71.90	164.00
G632	Lerchenzungen	2.71	100 PL	4.10	7.70	12.10	24.90	42.10	71.90	164.00
G653	Nero di Toscana (AS)	2.71	60 PL	4.10	7.70	12.10	24.90	42.10	71.90	164.00
G743	Red Russian Kale	2.71	80 PL	4.10	7.70	12.10	24.90	42.10	71.90	164.00

Precision seed: size S: 1.75-2.00 mm; size M: 2.0-2.25 mm

Item no.	Variety	Grain	500 gr	1,000 gr	2,500 gr	5,000 gr	10,000 gr	25,000 gr	50,000 gr
G225 S/M	Halbhoher grüner Krauser		6.90	10.90	22.10	35.90	59.90	129.00	219.00
G226 S/M	Westländer Winter		6.90	10.90	22.10	35.90	59.90	129.00	219.00
G632 S/M	Lerchenzungen		6.90	10.90	22.10	35.90	59.90	129.00	219.00
G653 S/M	Nero di Toscana (AS)		6.90	10.90	22.10	35.90	59.90	129.00	219.00
G743 S/M	Red Russian Kale		6.90	10.90	22.10	35.90	59.90	129.00	219.00

Turnip										Net prices in €
Item no.	Variety	Portion	suffice for	5 g	10 g	25 g	50 g	100 g	250 g	500 g
G244	Golden Ball	2.71	550 PL	4.60	7.10	14.60	23.60	40.90	89.00	159.00
G634	Petterson (AS)	2.71	750 PL	4.60	7.10	14.60	23.60	40.90	89.00	159.00
G669	Blanc globe à collet violet	2.71	550 PL	4.60	7.10	14.60	23.60	40.90	89.00	159.00

Precision seed: caliber size on request

Item no.	Variety	Grain	1,000 gr	2,500 gr	5,000 gr	10,000 gr	25,000 gr	50,000 gr
G244 S/M	Golden Ball		6.10	12.60	19.90	32.90	66.90	114.00
G669 S/M	Blanc globe à collet violet		6.10	12.60	19.90	32.90	66.90	114.00

Swede turnip										Net prices in €
Item no.	Variety	Portion	suffice for	5 g	10 g	25 g	50 g	100 g	250 g	500 g
G796	Simona	2.71	350 PL	4.60	7.10	14.60	23.60	40.90	89.00	159.00
G245	Wilhelmsburger	2.71	350 PL	4.60	7.10	14.60	23.60	40.90	89.00	159.00

Precision seed: caliber size on request

Item no.	Variety	Grain	1,000 gr	2,500 gr	5,000 gr	10,000 gr	25,000 gr	50,000 gr
G796 S/M	Simona		6.10	12.60	19.90	32.90	66.90	114.00
G245 S/M	Wilhelmsburger		6.10	12.60	19.90	32.90	66.90	114.00

Radish										Net prices in €
Item no.	Variety	Portion	suffice for	25 g	50 g	100 g	250 g	500 g	1 kg	2.5 kg
G329	Eiszapfen	2.71	450 PL	6.60	10.90	18.20	38.90	66.90	116.00	259.00
G330	Cherry Belle	2.71	450 PL	6.60	10.90	18.20	38.90	66.90	116.00	259.00
G331A	Marike	2.71	450 PL	8.40	13.60	22.40	48.20	82.90	144.00	319.00
G332	Sora	2.71	500 PL	6.60	10.90	18.20	38.90	66.90	116.00	259.00
G334	Rudi	2.71	450 PL	8.40	13.60	22.40	48.20	82.90	144.00	319.00
G618	French Breakfast 2	2.71	500 PL	6.60	10.90	18.20	38.90	66.90	116.00	259.00

Calibrated normal seed: size S: 2.50-2.75 mm; size M: 2.75-3.00 mm; size L: 3.00-3.25 mm

Item no.	Variety	Gram	100 g	250 g	500 g	1 kg	2.5 kg	5 kg
G329 S/M/L	Eiszapfen		25.60	54.90	94.90	164.00	364.00	659.00
G331A S/M/L	Marike		29.40	63.40	108.90	189.00	419.00	749.00
G332 S/M/L	Sora		25.60	54.90	94.90	164.00	364.00	659.00
G334 S/M/L	Rudi		29.40	63.40	108.90	189.00	419.00	749.00
G618 S/M/L	French Breakfast 2		25.60	54.90	94.90	164.00	364.00	659.00

Precision seed: size S: 2.50-2.75 mm; size M: 2.75-3.00 mm; size L: 3.00-3.25 mm

Item no.	Variety	Grain	10,000 gr	50,000 gr	100,000 gr	250,000 gr	500,000 gr	1 Mio gr
G329 S/M/L	Eiszapfen		33.90	129.00	219.00	494.00	889.00	1,645.00
G331A S/M/L	Marike		39.90	147.90	259.00	569.00	1,025.00	1,915.00
G332 S/M/L	Sora		33.90	129.00	219.00	494.00	889.00	1,645.00
G334 S/M/L	Rudi		39.90	147.90	259.00	569.00	1,025.00	1,915.00

(AS) = Amateur variety. Due to seed regulations, seeds only provided in small packaging units.
Further information on p. 42

Winter radish										Net prices in €
Item no.	Variety	Portion	suffice for	10 g	25 g	50 g	100 g	250 g	500 g	1 kg
G337	Ostergruß rosa 2	2.71	180 PL		6.70	10.40	17.90	37.90	67.50	116.00
G633	Laurin	3.04	100 PL	12.90	26.90	45.40	74.90	158.90	279.00	489.00
G787	Edward	3.04	100 PL	12.90	26.90	45.40	74.90	158.90	279.00	489.00
G815	New! Rettmann (AS)	3.04	100 PL	12.90	26.90	45.40	74.90	158.90	279.00	489.00
G693	Blauer Herbst und Winter (AS)	2.71	180 PL	5.10	10.20	17.70	28.90	62.90	109.00	191.00
G335	Runder schwarzer Winter	2.71	300 PL		6.10	10.20	17.20	36.80	68.00	112.00

Calibrated normal seed: size S: 2.50-2.75 mm; size M: 2.75-3.00 mm; size L: 3.00-3.25 mm

Item no.	Variety	Gram	25 g	50 g	100 g	250 g	500 g	1 kg
G337 S/M/L	Ostergruß rosa 2		9.10	15.40	25.40	53.90	94.00	161.00
G633 S/M/L	Laurin		32.70	56.40	92.90	201.90	358.00	614.00
G787 S/M/L	Edward		32.70	56.40	92.90	201.90	358.00	614.00
G815 S/M/L	New! Rettmann (AS)		32.70	56.40	92.90	201.90	358.00	614.00
G693 S/M/L	Blauer Herbst und Winter (AS)		13.60	22.80	37.60	81.90	144.00	249.00
G335 S/M/L	Runder schwarzer Winter		7.70	13.40	21.90	47.60	84.00	144.00

Precision seed: size S: 2.50-2.75 mm; size M: 2.75-3.00 mm; size L: 3.00-3.25 mm

Item no.	Variety	Grain	1,000 gr	5,000 gr	10,000 gr	50,000 gr	100,000 gr
G337 S/M/L	Ostergruß rosa 2		4.90	19.90	33.60	128.00	217.00
G633 S/M/L	Laurin		21.30	88.40	147.00	559.00	969.00
G787 S/M/L	Edward		21.30	88.40	147.00	559.00	969.00
G815 S/M/L	New! Rettmann (AS)		21.30	88.40	147.00	559.00	969.00
G693 S/M/L	Blauer Herbst und Winter (AS)		8.40	34.90	57.20	217.00	371.00
G335 S/M/L	Runder schwarzer Winter				24.60	93.40	159.00

Salsify										Net prices in €
Item no.	Variety	Portion	suffice for	10 g	25 g	50 g	100 g	250 g	500 g	1 kg
G400	Hoffmanns Schwarze Pfahl	3.04	100 PL	8.60	14.90	24.60	42.20	87.90	159.00	299.00
G625	Haferwurz	3.04	100 PL	8.60	14.90	24.60	42.20	87.90	159.00	299.00

Beetroot										Net prices in €
Item no.	Variety	Portion	suffice for	25 g	50 g	100 g	250 g	500 g	1 kg	2.5 kg
G343	Jannis	1.82	150 PL	8.50	13.60	23.40	48.90	84.60	144.00	324.00
G345	Robuschka	1.82	180 PL	8.50	13.60	23.40	48.90	84.60	144.00	324.00
G695	Gesche (AS)	1.82	200 PL	8.50	13.60	23.40	48.90	84.60	144.00	324.00
G341	Foniro	1.82	200 PL	8.50	13.60	23.40	48.90	84.60	144.00	324.00
G347	Ägyptische plattrunde	2.71	180 PL	9.90	15.90	26.90	56.10	93.10	164.00	369.00
G349	Tondo di Chioggia	2.71	200 PL	9.90	15.90	26.90	56.10	93.10	164.00	369.00
G768	Wintersonne (AS)	3.04	100 PL	15.40	24.90	42.90	89.90	153.40	262.00	589.00
G788	New! Rs-Rü-01.22	2.71	180 PL	9.90	15.90	26.90	56.10	93.10	164.00	369.00

Precision seed: size S: 3.0-3.5 mm; size M: 3.5-4.0 mm; size L: 4.0-4.5 mm

Item no.	Variety	Grain	10,000 gr	25,000 gr	50,000 gr	100,000 gr	250,000 gr	500,000 gr
G343 S/M/L	Jannis		35.90	74.90	125.60	219.20	486.00	872.00
G345 S/M/L	Robuschka		35.90	74.90	125.60	219.20	486.00	872.00
G695 S/M/L	Gesche (AS)		35.90	74.90	125.60	219.20	486.00	872.00
G341 S/M/L	Foniro		35.90	74.90	125.60	219.20	486.00	872.00
G349 S/M/L	Tondo di Chioggia		35.90	74.90	125.60	219.20	486.00	872.00
G768 S/M/L	Wintersonne (AS)		38.20	79.50	136.00	233.00	520.00	935.00

Carrots										Net prices in €
Item no.	Variety	Portion	suffice for	10 g	50 g	100 g	250 g	500 g	1 kg	2.5 kg
G795	New! MOG-SG-104 (AS)	3.04	1,000 PL	8.90	30.20	46.90	95.60	166.00	294.00	679.00
G286	Nantaise 2/Milan	3.04	1,000 PL	8.90	30.20	46.90	95.60	166.00	294.00	679.00
G287	Nantaise 2/Fynn	3.04	1,000 PL	8.90	30.20	46.90	95.60	166.00	294.00	679.00
G773	Vitella	3.04	1,000 PL	8.90	30.20	46.90	95.60	166.00	294.00	679.00

Carrots										Net prices in €
Item no.	Variety	Portion	suffice for	10 g	50 g	100 g	250 g	500 g	1 kg	2.5 kg
G774	Treenetaler (AS)	3.04	1,000 PL	8.90	30.20	46.90	95.60	166.00	294.00	679.00
G660	Dolciva	3.04	1,000 PL	9.40	30.90	48.20	99.90	176.00	309.00	704.00
G280A	Rodelika	3.04	1,000 PL	8.90	30.20	46.90	95.60	166.00	294.00	679.00
G803	New! Ronka	3.04	1,000 PL	8.90	30.20	46.90	95.60	166.00	294.00	679.00
G281A	Robila	3.04	1,000 PL	8.90	30.20	46.90	95.60	166.00	294.00	679.00
G668	Solvita	3.04	1,000 PL	8.90	30.20	46.90	95.60	166.00	294.00	679.00
G288	Oxhella	3.04	1,000 PL	8.90	30.20	46.90	95.60	166.00	294.00	679.00
G731	Weiße Küttiger (AS)	3.04	1,000 PL	9.40	30.90	48.20	99.90	176.00	309.00	704.00
G744	Gelbe Gochsheimer (AS)	3.04	1,000 PL	8.90	30.20	46.90	95.60	166.00	294.00	679.00
G772	Soletta (AS)	3.04	1,000 PL	8.90	30.20	46.90	95.60	166.00	294.00	679.00

Calibrated normal seed: size S: 1.25-1.5 mm; size M: 1.5-1.75 mm; size L: 1.75-2.0 mm

Item no.	Variety	Gram	50 g	100 g	250 g	500 g	1 kg	2.5 kg	5 kg
G795 S/M/L	New! MOG-SG-104 (AS)		41.60	64.90	133.00	223.00	411.00	949.00	1,850.00
G286 S/M/L	Nantaise 2/Milan		41.60	64.90	133.00	223.00	411.00	949.00	1,850.00
G287 S/M/L	Nantaise 2/Fynn		41.60	64.90	133.00	223.00	411.00	949.00	1,850.00
G773 S/M/L	Vitella		41.60	64.90	133.00	223.00	411.00	949.00	1,850.00
G774 S/M/L	Treenetaler (AS)		41.60	64.90	133.00	223.00	411.00	949.00	1,850.00
G660 S/M/L	Dolciva		49.20	78.00	158.00	273.00	484.00	1,115.00	2,185.00
G280A S/M/L	Rodelika		41.60	64.90	133.00	223.00	411.00	949.00	1,850.00
G803 S/M/L	New! Ronka		41.60	64.90	133.00	223.00	411.00	949.00	1,850.00
G281A S/M/L	Robila		41.60	64.90	133.00	223.00	411.00	949.00	1,850.00
G668 S/M/L	Solvita		41.60	64.90	133.00	223.00	411.00	949.00	1,850.00
G288 S/M/L	Oxhella		41.60	64.90	133.00	223.00	411.00	949.00	1,850.00
G744 S/M/L	Gelbe Gochsheimer (AS)		41.60	64.90	133.00	223.00	411.00		
G772 S/M/L	Soletta (AS)		41.60	64.90	133.00	223.00	411.00		

Precision seed: size S: 1.25-1.5 mm

Item no.	Variety	Grain	50,000 gr	100,000 gr	250,000 gr	500,000 gr	1 Mio gr	2.5 Mio gr	
G795 S	<div>New!</div> MOG-SG-104 (AS)		47.90	74.90	153.00	266.00	472.00	1,105.00	
G286 S	Nantaise 2/Milan		47.90	74.90	153.00	266.00	472.00	1,105.00	
G287 S	Nantaise 2/Fynn		47.90	74.90	153.00	266.00	472.00	1,105.00	
G773 S	Vitella		47.90	74.90	153.00	266.00	472.00	1,105.00	
G774 S	Treenetaler (AS)		47.90	74.90	153.00	266.00	472.00	1,105.00	
G660 S	Dolciva		48.90	77.90	158.00	272.00	489.00	1,125.00	
G280AS	Rodelika		47.90	74.90	153.00	266.00	472.00	1,105.00	
G803 S	<div>New!</div> Ronka		47.90	74.90	153.00	266.00	472.00	1,105.00	
G281AS	Robila		47.90	74.90	153.00	266.00	472.00	1,105.00	
G668 S	Solvita		47.90	74.90	153.00	266.00	472.00	1,105.00	
G288 S	Oxhella		47.90	74.90	153.00	266.00	472.00	1,105.00	
G744 S	Gelbe Gochsheimer (AS)				Unfortunately not available for the 2024 growing season.				
G772 S	Soletta (AS)				Unfortunately not available for the 2024 growing season.				

Precision seed: size M: 1.5-1.75 mm

Item no.	Variety	Grain	50,000 gr	100,000 gr	250,000 gr	500,000 gr	1 Mio gr	2.5 Mio gr
G795 M	<div>New!</div> MOG-SG-104 (AS)		50.90	79.70	161.00	279.00	502.00	1,160.00
G286 M	Nantaise 2/Milan		50.90	79.70	161.00	279.00	502.00	1,160.00
G287 M	Nantaise 2/Fynn		50.90	79.70	161.00	279.00	502.00	1,160.00
G773 M	Vitella		Unfortunately not available for the 2024 growing season.					
G774 M	Treenetaler (AS)		50.90	79.70	161.00	279.00	502.00	1,160.00
G660 M	Dolciva		67.40	104.90	212.00	369.00	654.00	1,515.00
G280AM	Rodelika		50.90	79.70	161.00	279.00	502.00	1,160.00
G803 M	<div>New!</div> Ronka		50.90	79.70	161.00	279.00	502.00	1,160.00
G281AM	Robila		50.90	79.70	161.00	279.00	502.00	1,160.00
G668 M	Solvita		50.90	79.70	161.00	279.00	502.00	1,160.00

(AS) = Amateur variety. Due to seed regulations, seeds only provided in small packaging units.
Further information on p. 42

Precision seed: size M: 1.5-1.75 mm

Item no.	Variety	Grain	50,000 gr	100,000 gr	250,000 gr	500,000 gr	1 Mio gr	2.5 Mio gr
G288 M	Oxhella		50.90	79.70	161.00	279.00	502.00	1,160.00
G744 M	Gelbe Gochsheimer (AS)		50.90	79.70	161.00	279.00	502.00	
G772 M	Soletta (AS)		Unfortunately not available for the 2024 growing season.					

Precision seed: size L: 1.75-2.00 mm

Item no.	Variety	Grain	50,000 gr	100,000 gr	250,000 gr	500,000 gr	1 Mio gr	2.5 Mio gr
G795 L	New! MOG-SG-104 (AS)		58.90	91.80	189.00	336.00	589.00	1,380.00
G286 L	Nantaise 2/Milan		58.90	91.80	189.00	336.00	589.00	1,380.00
G287 L	Nantaise 2/Fynn		58.90	91.80	189.00	336.00	589.00	1,380.00
G773 L	Vitella		Unfortunately not available for the 2024 growing season.					
G774 L	Treenetaler (AS)		58.90	91.80	189.00	336.00	589.00	1,380.00
G660 L	Dolciva		67.90	106.00	216.00	374.00	664.00	1,565.00
G280AL	Rodelika		58.90	91.80	189.00	336.00	589.00	1,380.00
G803 L	New! Ronka		58.90	91.80	189.00	336.00	589.00	1,380.00
G281AL	Robila		58.90	91.80	189.00	336.00	589.00	1,380.00
G668 L	Solvita		58.90	91.80	189.00	336.00	589.00	1,380.00
G288 L	Oxhella		58.90	91.80	189.00	336.00	589.00	1,380.00
G744 L	Gelbe Gochsheimer (AS)		58.90	91.80	189.00	336.00	589.00	
G772 L	Soletta (AS)		Unfortunately not available for the 2024 growing season.					

Parsnips										Net prices in €
Item no.	Variety	Portion	suffice for	25 g	50 g	100 g	250 g	500 g	1 kg	2.5 kg
G290	Halblange Weiße	2.71	400 PL	11.90	19.30	30.90	65.40	106.00	187.00	433.00
G291	Aromata	3.04	400 PL	14.40	23.90	37.80	78.90	127.00	226.00	519.00
G619	White Gem	3.04	400 PL	14.40	23.90	37.80	78.90	127.00	226.00	519.00
G745	Schleswiger Schnee	3.04	400 PL	14.40	23.90	37.80	78.90	127.00	226.00	519.00

Calibrated normal seed: size S: 2.75-3.75 mm, size M: 3.75-4.75 mm, size L: 4.75-5.75 mm

Item no.	Variety	Gram	25 g	50 g	100 g	250 g	500 g	1 kg	2.5 kg
G290 S/M/L	Halblange Weiße		17.90	28.20	45.90	97.00	156.00	274.00	637.00
G291 S/M/L	Aromata		21.30	33.90	54.60	114.00	184.00	324.00	759.00
G619 S/M/L	White Gem		21.30	33.90	54.60	114.00	184.00	324.00	759.00
G745 S/M/L	Schleswiger Schnee		21.30	33.90	54.60	114.00	184.00	324.00	759.00

Parsley root										Net prices in €
Item no.	Variety	Portion	suffice for	10 g	25 g	50 g	100 g	250 g	500 g	1 kg
G315	Halblange	2.71	750 PL	7.40	14.90	23.80	38.40	82.90	136.00	254.00
G701	Osborne	3.04	750 PL	8.90	17.90	28.60	45.60	92.90	159.00	302.00

Calibrated normal seed: size S: 1.25-1.5 mm; size M: 1.5-1.75 mm; size L: 1.75-2.0 mm

Item no.	Variety	Gram	10 g	25 g	50 g	100 g	250 g	500 g	1 kg
G315 S/M/L	Halblange		10.10	20.40	33.10	52.60	107.40	186.00	344.00
G701 S/M/L	Osborne		12.10	24.60	39.60	62.90	128.90	224.00	414.00

Celeriac								Net prices in €	
Item no.	Variety	Portion	suffice for	1 g	2 g	5 g	10 g	25 g	50 g
G708	Athos	2.71	100 PL	12.40	21.70	46.40	79.90	166.00	279.00
G402	Ibis	2.71	100 PL	12.40	21.70	46.40	79.90	166.00	279.00
G404	Mars	2.71	100 PL	12.40	21.70	46.40	79.90	166.00	279.00
G406	Monarch	1.82	100 PL	9.20	16.10	34.40	59.40	124.00	204.00
G707	Porthos	2.71	100 PL	12.40	21.70	46.40	79.90	166.00	279.00

Pelleted form (primed)

Item no.	Variety	Pellets	500 EP	1,000 EP	2,000 EP	3,000 EP	5,000 EP	10,000 EP
G708 EP	Athos		Check availability in the online shop from January.					
G406 EP	Monarch		23.80	43.10	77.80	105.50	156.00	279.00
G707 EP	Porthos		Check availability in the online shop from January.					

Pascal celery									Net prices in €	
Item no.	Variety	Portion	suffice for	1 g	2 g	5 g	10 g	25 g	50 g	
G409A	Tall Utah	2.71	150 PL	12.40	21.70	46.40	79.90	166.00	279.00	

Florence fennel									Net prices in €	
Item no.	Variety	Portion	suffice for	5 g	10 g	25 g	50 g	100 g	250 g	500 g
G190	Fino			Unfortunately not available for the 2024 growing season.						
G679	Selma	2.71	100 PL	10.40	17.30	35.80	60.40	107.00	234.00	419.00

Pelleted form (primed)

Item no.	Variety	Pellets	500 EP	1,000 EP	2,000 EP	3,000 EP	5,000 EP	10,000 EP		
G190 EP	Fino			Unfortunately not available for the 2024 growing season.						
G679 EP	Selma		23.20	43.20	79.00	108.00	159.00	287.00		

Precision seed

Item no.	Variety	Grain	1,000 gr	2,500 gr	5,000 gr	10,000 gr	25,000 gr	50,000 gr		
G190	Fino			Unfortunately not available for the 2024 growing season.						
G679	Selma		14.70	30.90	51.40	86.90	192.00	337.00		

Spinach									Net prices in €	
Item no.	Variety	Portion	suffice for	100 g	500 g	1 kg	2.5 kg	5 kg	10 kg	20 kg
G410	Butterflay	2.71	10 m²	5.40	17.80	29.30	62.30	111.00	194.00	353.00
G415	Gammason	3.04	10 m²	6.90	21.90	36.10	77.30	138.00	243.00	436.00
G412	Thorin	2.71	10 m²	5.40	17.80	29.30	62.30	111.00	194.00	353.00
G414	Winterriesen/Verdil	3.04	10 m²	6.90	21.90	36.10	77.30	138.00	243.00	436.00

Calibrated normal seed: caliber size on request

Item no.	Variety	Gram	500 g	1 kg	2.5 kg	5 kg	10 kg	20 kg		
G410 M	Butterflay		23.50	39.10	83.10	147.00	261.00	467.00		
G415 M	Gammason		28.60	47.60	101.00	180.00	316.00	569.00		
G412 M	Thorin		23.50	39.10	83.10	147.00	261.00	467.00		
G414 M	Winterriesen/Verdil		28.60	47.60	101.00	180.00	316.00	569.00		

New Zealand spinach									Net prices in €	
Item no.	Variety	Portion	suffice for	10 g	25 g	50 g	100 g	250 g	500 g	1 kg
G687	Neuseeländer Spinat	3.04	35 PL	6.50	13.20	22.30	39.30	80.10	133.00	235.00

Malabar spinach									Net prices in €	
Item no.	Variety	Portion	suffice for	5 g	10 g	25 g	50 g	100 g		
G715	Malabarspinat	3.04	15 PL	10.30	16.70	35.30	60.80	102.00		

Spinach beet									Net prices in €	
Item no.	Variety	Portion	suffice for	10 g	25 g	50 g	100 g	250 g	500 g	1 kg
G270	Glatter Silber 3	2.71	100 PL	5.20	10.90	18.40	30.60	63.10	109.00	189.00
G746	White Silver/Brilliant	2.71	100 PL	5.20	10.90	18.40	30.60	63.10	109.00	189.00
G272	Lucullus	2.71	120 PL	5.20	10.90	18.40	30.60	63.10	109.00	189.00
G650	Jessica	3.04	90 PL	14.10	30.20	48.90	82.40	168.00	294.00	514.00
G675	Verde da taglio (Schnittmangold)	2.71	200 PL	5.20	10.90	18.40	30.60	63.10	109.00	189.00
G639	Feurio (AS)	3.04	80 PL	7.60	15.60	26.30	44.20	90.80		
G644	Pirol (AS)	3.04	120 PL	7.60	15.60	26.30	44.20	90.80		
G648	Rainbow	3.04	80 PL	8.70	18.20	30.80	51.40	104.00	184.00	319.00

Calibrated normal seed: caliber size on request

Item no.	Variety	Gram	10 g	25 g	50 g	100 g	250 g	500 g	1 kg	
G270 M	Glatter Silber 3		7.10	14.60	24.60	41.40	84.00	147.00	259.00	
G746 M	White Silver/Brilliant		7.10	14.60	24.60	41.40	84.00	147.00	259.00	
G650 M	Jessica		18.60	38.90	65.90	112.00	229.00	394.00	694.00	
G639 M	Feurio (AS)		10.20	21.10	35.90	59.90	124.00	214.00	379.00	
G644 M	Pirol (AS)		10.20	21.10	35.90	59.90	124.00	214.00	379.00	
G648 M	Rainbow		11.70	24.60	41.60	69.90	143.00	247.00	429.00	

(AS) = Amateur variety. Due to seed regulations, seeds only provided in small packaging units.
Further information on p. 42

Rocket										Net prices in €
Item no.	Variety	Portion	suffice for	25 g	50 g	100 g	250 g	500 g	1 kg	2.5 kg
G480	Ruca (Rocket)	1.82	700 PL	5.10	8.70	14.70	31.20	53.90	96.90	224.00

Wild Rocket										Net prices in €
Item no.	Variety	Portion	suffice for	5 g	10 g	25 g	50 g	100 g	250 g	500 g
G481	Wilde Rauke (Wild Rocket)	2.71	800 PL	9.30	15.90	33.70	56.90	96.40	204.00	356.00

Multi seed Pellets										
Item no.	Variety	Pellets	500 EP	1,000 EP	5,000 EP	10,000 EP	50,000 EP	100,000 EP		
G481 EP	Wilde Rauke (Wild Rocket)		11.10	19.70	85.20	142.00	589.00	989.00		

Bucks Horn Plantain										Net prices in €
Item no.	Variety	Portion	suffice for	5 g	10 g	25 g	50 g	100 g	250 g	500 g
G611	Hirschhornwegerich	2.71	700 PL	9.30	15.90	33.70	56.90	96.40	204.00	356.00

Namenia										Net prices in €
Item no.	Variety	Portion	suffice for	25 g	50 g	100 g	250 g	500 g	1 kg	2.5 kg
G490	Namenia	1.82	700 PL	6.20	10.70	17.90	38.40	66.40	118.00	279.00

Chinese leaves										Net prices in €
Item no.	Variety	Portion	suffice for	10 g	25 g	50 g	100 g	250 g	500 g	1 kg
G727	Pikantes Asia-Quartett (Spicy chinese quartet)	3.04	5 m²	5.90	12.00	19.50	32.80	71.40	126.00	226.00
G247	Green in Snow	2.71	5 m²	5.50	11.40	18.40	31.00	67.50	118.00	213.00
G248	Red Giant	2.71	5 m²	5.50	11.40	18.40	31.00	67.50	118.00	213.00
G249	Mizuna	2.71	5 m²	5.50	11.40	18.40	31.00	67.50	118.00	213.00
G638	Moutarde Rouge Metis	2.71	5 m²	5.50	11.40	18.40	31.00	67.50	118.00	213.00
G779	Wasabino	2.71	5 m²	5.50	11.40	18.40	31.00	67.50	118.00	213.00
G743	Red Russian Kale	2.71	80 PL	12.10	24.90	42.10	71.90	164.00	314.00	599.00

Cress										Net prices in €
Item no.	Variety	Portion	suffice for	250 g	500 g	1 kg	2.5 kg	5 kg	10 kg	25 kg
G250	Einfache Kresse	2.71	5 m²	6.20	9.80	16.20	33.30	54.20	90.90	190.00
G251	Großblättrige Kresse	2.71	5 m²	7.30	11.90	19.30	40.70	67.70	107.00	221.00

Corn salad (Lamb's Lettuce)										Net prices in €
Item no.	Variety	Portion	suffice for	25 g	50 g	100 g	250 g	500 g	1 kg	2.5 kg
G180	Verte à coeur plein 2	3.04	6 m²	11.60	18.90	31.90	66.90	112.00	198.00	434.00
G181	Verte de Cambrai	3.04	6 m²	11.60	18.90	31.90	66.90	112.00	198.00	434.00
G183	Vit	3.04	6 m²	11.60	18.90	31.90	66.90	112.00	198.00	434.00
G184	Elan	3.04	6 m²	11.60	18.90	31.90	66.90	112.00	198.00	434.00

Precision seed: size M: 2.00-2.25 mm; size L: 2.25-2.50 mm										
Item no.	Variety	Grain	50,000 gr	100,000 gr	250,000 gr	500,000 gr	1 Mio gr			
G181 M	Verte de Cambrai		42.40	71.60	149.00	249.00	442.00			
G183 M	Vit		42.40	71.60	149.00	249.00	442.00			
G184 M	Elan		42.40	71.60	149.00	249.00	442.00			
G181 L	Verte de Cambrai		56.70	95.70	199.00	339.00	589.00			
G183 L	Vit		56.70	95.70	199.00	339.00	589.00			
G184 L	Elan		56.70	95.70	199.00	339.00	589.00			

Winterpurslane (Claytonia)										Net prices in €
Item no.	Variety	Portion	suffice for	5 g	10 g	25 g	50 g	100 g	250 g	500 g
G435	Winterpostelein	3.04	700 PL	9.60	16.60	35.40	59.90	101.00	216.00	374.00

Butterhead lettuce									Net prices in €
Item no.	Variety	Portion	suffice for	1 g	2.5 g	5 g	10 g	25 g	50 g
G359	Briweri	3.04	80 PL	9.90	20.10	31.90	50.90	106.00	
G364	Rolando	3.04	100 PL	9.10	18.30	28.90	46.30	96.90	169.00
G790	Finja	3.04	100 PL	8.30	16.60	26.40	42.80	89.90	158.00
G793	Lotta (KS-SAK-UB-LOT)	3.04	100 PL	8.30	16.60	26.40	42.80	89.90	158.00
G603	Lucinde	3.04	100 PL	9.10	18.30	28.90	46.30	96.90	169.00
G640	Pirat	3.04	100 PL	9.10	18.30	28.90	46.30	96.90	169.00
G368	Merveille des quatre saisons	2.71	120 PL	5.60	11.20	17.90	28.60	59.60	104.00

Pelleted form (primed)

Item no.	Variety	Pellets	500 EP	1,000 EP	2,000 EP	3,000 EP	5,000 EP	10,000 EP
G359 EP	Briweri		23.70	37.60	69.90	98.40	154.00	289.00
G790 EP	Finja		23.70	37.60	69.90	98.40	154.00	289.00
G793 EP	Lotta (KS-SAK-UB-LOT)		23.70	37.60	69.90	98.40	154.00	289.00
G603 EP	Lucinde	Unfortunately not available for the 2024 growing season.						
G640 EP	Pirat		23.70	37.60	69.90	98.40	154.00	289.00

Iceberg									Net prices in €
Item no.	Variety	Portion	suffice for	1 g	2.5 g	5 g	10 g	25 g	50 g
G370	Laibacher Eis 4	3.04	120 PL	6.90	13.60	21.90	35.60	74.80	132.50
G356	Saladin	2.71	120 PL	6.60	12.90	19.90	32.90	68.90	122.00
G600	Mythos	3.04	120 PL	7.90	14.90	24.10	39.30	82.90	147.00

Pelleted form (primed)

Item no.	Variety	Pellets	500 EP	1,000 EP	2,000 EP	3,000 EP	5,000 EP	10,000 EP
G370 EP	Laibacher Eis 4		23.70	37.60	69.90	98.40	154.00	289.00
G600 EP	Mythos		23.70	37.60	69.90	98.40	154.00	289.00

Batavia									Net prices in €
Item no.	Variety	Portion	suffice for	1 g	2.5 g	5 g	10 g	25 g	50 g
G791	Emmi	3.04	120 PL	9.10	18.30	28.90	46.30	96.90	169.00
G792	KS-SAK-VB-11811	3.04	150 PL	9.10	18.30	28.90	46.30	96.90	169.00
G372	Tarengo	3.04	100 PL	8.30	16.60	26.40	42.80	89.90	158.00
G373	Maravilla de Verano	2.71	120 PL	6.60	12.90	19.90	32.90	68.90	122.00
G655	Saragossa	3.04	120 PL	8.30	16.60	26.40	42.80	89.90	158.00
G374	Kamalia	3.04	120 PL	7.90	14.90	24.10	39.30	82.90	147.00
G378	Amerikanischer brauner	2.71	150 PL	5.40	10.80	17.40	27.60	57.20	101.00

Pelleted form (primed)

Item no.	Variety	Pellets	500 EP	1,000 EP	2,000 EP	3,000 EP	5,000 EP	10,000 EP
G791 EP	Emmi		23.70	37.60	69.90	98.40	154.00	289.00
G792 EP	KS-SAK-VB-11811		23.70	37.60	69.90	98.40	154.00	289.00
G373 EP	Maravilla de Verano		23.70	37.60	69.90	98.40	154.00	289.00
G655 EP	Saragossa		23.70	37.60	69.90	98.40	154.00	289.00

Cos lettuce									Net prices in €
Item no.	Variety	Portion	suffice for	1 g	2.5 g	5 g	10 g	25 g	50 g
G376	Valmaine	2.71	120 PL	5.40	10.80	17.40	27.60	57.20	101.00

Pelleted form (primed)

Item no.	Variety	Pellets	500 EP	1,000 EP	2,000 EP	3,000 EP	5,000 EP	10,000 EP
G376	Valmaine		23.70	37.60	69.90	98.40	154.00	289.00

Oak leaf lettuce									Net prices in €
Item no.	Variety	Portion	suffice for	1 g	2.5 g	5 g	10 g	25 g	50 g
G379	Red Salad Bowl	2.71	120 PL	5.40	10.80	17.40	27.60	57.20	101.00
G799	KS-SAS-VB-2081	3.04	100 PL	7.90	14.90	24.10	39.30	82.90	147.00

(AS) = Amateur variety. Due to seed regulations, seeds only provided in small packaging units.
Further information on p. 42

Oak leaf lettuce									Net prices in €
Item no.	Variety	Portion	suffice for	1 g	2.5 g	5 g	10 g	25 g	50 g
G379B	RubINETte	3.04	120 PL	7.90	14.90	24.10	39.30	82.90	147.00
G637	Piro	3.04	100 PL	9.10	18.30	28.90	46.30	96.90	169.00
G610	Bijella	3.04	120 PL	7.90	14.90	24.10	39.30	82.90	147.00
G382	Till	2.71	120 PL	5.40	10.80	17.40	27.60	57.20	101.00
G602	Cerbiatta	2.71	120 PL	5.40	10.80	17.40	27.60	57.20	101.00

Pelleted form (primed)

Item no.	Variety	Pellets	500 EP	1,000 EP	2,000 EP	3,000 EP	5,000 EP	10,000 EP
G799 EP	KS-SAS-VB-2081		23.70	37.60	69.90	98.40	154.00	289.00
G379BEP	RubINETte		23.70	37.60	69.90	98.40	154.00	289.00
G637 EP	Piro		23.70	37.60	69.90	98.40	154.00	289.00
G382 EP	Till		23.70	37.60	69.90	98.40	154.00	289.00
G602 EP	Cerbiatta		23.70	37.60	69.90	98.40	154.00	289.00

Leaf lettuce									Net prices in €
Item no.	Variety	Portion	suffice for	1 g	2.5 g	5 g	10 g	25 g	50 g
G380	Lollo Rossa	2.71	120 PL	5.40	10.80	17.40	27.60	57.20	101.00
G381	Lollo Bionda	2.71	120 PL	5.40	10.80	17.40	27.60	57.20	101.00

Pelleted form (primed)

Item no.	Variety	Pellets	500 EP	1,000 EP	2,000 EP	3,000 EP	5,000 EP	10,000 EP
G380 EP	Lollo Rossa		23.70	37.60	69.90	98.40	154.00	289.00
G381 EP	Lollo Bionda		23.70	37.60	69.90	98.40	154.00	289.00

Baby-Leaf									Net prices in €
Item no.	Variety	Portion	suffice for	1 g	2.5 g	5 g	10 g	25 g	50 g
G769	Divino (AS)	2.71	200 PL	5.40	10.80	17.40	27.60	57.20	101.00

Endivien									Net prices in €	
Item no.	Variety	Portion	suffice for	2.5 g	5 g	10 g	25 g	50 g	100 g	250 g
G388	Diva	2.71	150 PL	6.40	9.90	16.40	33.40	55.90	95.90	216.00
G385	Escariol grüner	2.71	150 PL	6.40	9.90	16.40	33.40	55.90	95.90	216.00
G389A	Wallonne (Frisée)	2.71	150 PL	7.60	11.90	19.60	39.90	67.20	114.00	259.00

Chicory Sugar Loaf									Net prices in €
Item no.	Variety	Portion	suffice for	2.5 g	5 g	10 g	25 g	50 g	100 g
G390	Zuckerhut	2.71	150 PL	7.60	11.90	19.60	39.90	67.20	114.00
G688	Catalogna 'Aurelia'	3.04	75 PL	8.40	13.40	22.10	46.90	82.40	147.00
G797	Catalogna 'Rossa Italia'	2.71	75 PL	7.60	11.90	19.60	39.90	67.20	114.00
G690	Radicchio '506 TT'	3.04	75 PL	8.40	13.40	22.10	46.90	82.40	147.00
G691	Radicchio 'Treviso 206 TT'	3.04	75 PL	8.40	13.40	22.10	46.90	82.40	147.00

Seed Pellets

Item no.	Variety	Pellets	500 EP	1,000 EP	2,000 EP	3,000 EP	5,000 EP	10,000 EP
G688 EP	Catalogna 'Aurelia'		18.90	31.70	55.40	74.90	114.00	217.00
G690 EP	Radicchio '506 TT'		18.90	31.70	55.40	74.90	114.00	217.00
G691 EP	Radicchio 'Treviso 206 TT'		18.90	31.70	55.40	74.90	114.00	217.00

Chicory									Net prices in €	
Item no.	Variety	Portion	suffice for	5 g	10 g	25 g	50 g	100 g	250 g	500 g
G652	Macun	3.04	200 PL	16.80	27.40	56.20	94.90	161.00	364.00	684.00
G395	Etardo (AS)	2.71	200 PL	12.40	19.90	41.80	70.40	121.00	269.00	507.00

Precision seed

Item no.	Variety	Grain	2,500 gr	5,000 gr	10,000 gr	25,000 gr	50,000 gr	100,000 gr	250,000 gr
G652	Macun		20.30	33.20	54.40	115.00	199.00	355.00	829.00

Squash										Net prices in €
Item no.	Variety	Portion	suffice for	50 gr	100 gr	250 gr	500 gr	1,000 gr	2,500 gr	5,000 gr
G262	Red Kuri	3.04	7 PL	7.90	12.30	24.90	40.80	67.90	152.00	279.00
G606	Solor	3.04	7 PL	7.30	12.30	25.90	42.90	72.60	157.00	276.00
G614	Fictor	3.04	7 PL	11.40	18.90	39.90	66.40	109.00	239.00	419.00
G263	Green Hokkaido	3.04	7 PL	7.90	12.30	24.90	40.80	67.90	152.00	279.00
G263A	Blue Kuri	3.04	7 PL	11.20	18.40	38.40	64.60	109.00	236.00	414.00
G268	Blue Ballet	4.11	7 PL	19.80	31.40	61.80	103.00	184.00	409.00	774.00
G261	Rouge vif d'Etampes (Roter Zentner)	3.04	7 PL	8.20	12.40	25.40	43.40	71.90	156.00	299.00
G256	Bischofsmütze	4.11	7 PL	16.30	26.20	53.20	87.90	154.00	329.00	579.00
G254	Zaphito	3.04	7 PL	14.70	22.60	47.90	79.90	132.00	289.00	529.00
G722	Nutterbutter	4.11	7 PL	11.10	17.90	38.20	63.90	108.00	233.00	408.00
G266	Butternut Waltham	3.04	7 PL	8.10	11.90	25.40	42.20	71.90	158.00	279.00
G265	Muscat de Provence	3.04	7 PL	11.20	18.40	38.40	64.60	109.00	236.00	414.00
G259	Futsu Black	3.04	7 PL	7.20	10.80	21.60	34.20	58.90	139.00	259.00
G267	Sweet Dumpling	3.04	7 PL	5.60	8.80	16.60	26.70	45.60	90.90	167.00
G812	New! Bush Delicata (AS)	3.04	7 PL	8.10	11.90	25.40	42.20	71.90	158.00	279.00
G747	Table Queen	3.04	7 PL	5.60	8.80	16.60	26.70	45.60	90.90	167.00
G654	Filamento (AS)	3.04	7 PL	7.90	12.90	27.80	45.60	76.90	164.00	286.00
G258	Patisson blanc	3.04	7 PL	7.20	10.80	21.60	34.20	58.90	139.00	259.00
G255	Jack o'Lantern	3.04	7 PL	11.20	18.40	38.40	64.60	109.00	236.00	414.00

Ornamental gourd										Net prices in €
Item no.	Variety	Portion	suffice for	10 g	25 g	50 g	100 g			
G253	Bunte Zierkürbis-Mischung	3.04	7 PL	21.10	43.80	74.60	123.00			

Melons										Net prices in €
Item no.	Variety	Portion	suffice for	50 gr	100 gr	250 gr	500 gr	1,000 gr		
G667	Murrmel (Charentais melon) (AS)	3.04	12 PL	8.40	13.10	25.20	44.60	75.40		
G276	Petit Gris de Rennes (Cantaloupe)	3.04	12 PL	6.90	10.80	20.90	36.90	62.90		
G277	Sugar Baby (Watermelon)	3.04	10 PL	6.90	10.80	20.90	36.90	62.90		

Ridge cucumbers										Net prices in €
Item no.	Variety	Portion	suffice for	5 g	10 g	25 g	50 g	100 g	250 g	
G170	Vorgebirgstrauben	1.82	20 PL		11.90	24.90	41.90	74.00	164.00	
G776	Liefje (AS)	2.71	12 PL	14.90	24.90	51.40	87.20	149.00	343.00	

Precision seed									
Item no.	Variety	Grain	50 gr	100 gr	250 gr	500 gr	1,000 gr		
G776	Liefje (AS)		10.40	16.60	33.20	52.70	82.90		

Salad cucumbers										Net prices in €
Item no.	Variety	Portion	suffice for	5 g	10 g	25 g	50 g	100 g	250 g	
G172	Helena	5.51	4 PL			only available in grain				
G714	Cleopha (AS)	5.51	4 PL			only available in grain				
G813	Kalomira (AS)	5.51	4 PL			only available in grain				
G176	Arola	4.11	6 PL			only available in grain				
G680	La Diva	4.11	8 PL			only available in grain				
G174	Tanja	2.71	12 PL	14.90	24.90	51.40	87.20	149.00	343.00	
G175	Persika	3.04	15 PL	17.90	29.60	61.80	108.00	179.00	409.00	

Precision seed									
Item no.	Variety	Grain	25 gr	50 gr	100 gr	250 gr	500 gr	1,000 gr	
G172	Helena		29.20	48.40	83.70	176.00	324.00	624.00	
G714	Cleopha (AS)		29.20	48.40	83.70	176.00	324.00	624.00	
G813	Kalomira (AS)		29.20	48.40	83.70	176.00	324.00	624.00	
G176	Arola		9.20	15.40	26.80	56.60	102.00	202.00	
G680	La Diva		9.20	15.40	26.80	56.60	102.00	202.00	

(AS) = Amateur variety. Due to seed regulations, seeds only provided in small packaging units. Further information on p. 42

Precision seed

Item no.	Variety	Grain	25 gr	50 gr	100 gr	250 gr	500 gr	1,000 gr
G174	Tanja			10.40	16.60	33.20	52.70	82.90
G175	Persika			11.60	18.60	36.90	58.60	92.60

Courgette										Net prices in €
Item no.	Variety	Portion	suffice for	10 g	25 g	50 g	100 g	250 g	500 g	1 kg
G620	Serafina	3.04	8 PL	9.90	19.30	30.80	49.40	104.00	184.00	329.00
G818	New! Inizia (AS)	3.04	8 PL	9.90	19.30	30.80	49.40	104.00	184.00	329.00
G449	Alberello	2.71	14 PL	6.60	12.60	20.20	32.40	68.40	121.00	218.00
G823	New! Malachita	3.04	8 PL	9.90	19.30	30.80	49.40	104.00	184.00	329.00
G450	Cocozele von Tripolis	2.71	10 PL	6.60	12.60	20.20	32.40	68.40	121.00	218.00
G451	Zuboda	2.71	10 PL	6.60	12.60	20.20	32.40	68.40	121.00	218.00
G763	Solara (AS)	2.71	14 PL	10.40	20.40	32.60	52.40	109.00	194.00	349.00

Precision seed

Item no.	Variety	Grain	100 gr	250 gr	500 gr	1,000 gr	2,500 gr
G620	Serafina		21.90	42.20	67.60	108.00	229.00
G818	New! Inizia (AS)		21.90	42.20	67.60	108.00	229.00
G449	Alberello		15.40	29.80	47.80	76.40	159.00
G823	New! Malachita		21.90	42.20	67.60	108.00	229.00
G451	Zuboda		15.40	29.80	47.80	76.40	159.00
G763	Solara (AS)		15.40	29.80	47.80	76.40	159.00

Pepper										Net prices in €
Item no.	Variety	Portion	suffice for	1 g	2 g	5 g	10 g	25 g	50 g	
G299	Pantos	3.04	10 PL	only available in grain						
G810	New! Resi (AS)	3.04	10 PL	10.30	15.40	28.90	49.90	112.00	192.00	
G677	Corno Rosso	3.04	10 PL	12.20	18.40	34.90	59.40	134.00	236.00	
G642	Corno Giallo	3.04	10 PL	12.20	18.40	34.90	59.40	134.00	236.00	
G754	Lady Lou (AS)	3.04	10 PL	16.40	24.90	47.90	82.20	184.00	329.00	
G752	Kyra	5.51	5 PL	only available in grain						
G753	Zazu	5.51	5 PL	only available in grain						
G303B	Sweet Dreams	3.04	10 PL	12.20	18.40	34.90	59.40	134.00	236.00	
G309A	Ferenc Tender	3.04	15 PL	10.30	15.40	28.90	49.90	112.00	192.00	
G300	Yolo Wonder	3.04	15 PL	10.30	15.40	28.90	49.90	112.00	192.00	
G685	Alfonsina (AS)	3.04	10 PL	12.20	18.40	34.90	59.40	134.00	236.00	
G751	Yellow California Wonder (AS)	3.04	10 PL	12.20	18.40	34.90	59.40	134.00	236.00	
G742	Chocobell (AS)	3.04	10 PL	16.40	24.90	47.90	82.20	184.00	329.00	
G306	Pusztagold	3.04	15 PL	10.30	15.40	28.90	49.90	112.00	192.00	
G661	Liebesapfel (AS)	3.04	15 PL	10.30	15.40	28.90	49.90	112.00	192.00	
G755	Padron	3.04	10 PL	16.40	24.90	47.90	82.20	184.00	329.00	
G740	Fritz (AS)	3.04	10 PL	16.40	24.90	47.90	82.20	184.00	329.00	
G721	Flynn	5.51	4 PL	only available in grain						
G720	Radja	5.51	4 PL	only available in grain						
G674	Türkischer Gewürzpaprika (AS)	3.04	12 PL	16.40	24.90	47.90	82.20	184.00	329.00	
G304	De Cayenne	3.04	20 PL	10.30	15.40	28.90	49.90	112.00	192.00	
G778	Gelbes Rüsselchen (AS)	3.04	15 PL	16.40	24.90	47.90	82.20	184.00	329.00	
G657	Jalapeno Ruben	3.04	15 PL	16.40	24.90	47.90	82.20	184.00	329.00	
G804	Red Gunda (AS)	3.04	15 PL	16.40	24.90	47.90	82.20	184.00	329.00	
G684	Lila Luzi	3.04	15 PL	16.40	24.90	47.90	82.20	184.00	329.00	
G673	Habanero Orange	3.04	10 PL	only available in grain						
G777	NuMex Suave	3.04	15 PL	16.40	24.90	47.90	82.20	184.00	329.00	

Precision seed

Item no.	Variety	Grain	50 gr	100 gr	250 gr	500 gr	1,000 gr	2,500 gr
G299	Pantos			20.20	38.90	59.90	102.00	227.00
G810	New! Resi (AS)			11.90	22.90	35.60	59.90	129.00

Precision seed

Item no.	Variety	Grain	50 gr	100 gr	250 gr	500 gr	1,000 gr	2,500 gr
G677	Corno Rosso			15.20	28.90	44.90	74.90	164.00
G642	Corno Giallo			15.20	28.90	44.90	74.90	164.00
G754	Lady Lou (AS)			16.30	31.70	47.60	79.90	177.00
G752	Kyra		28.20	47.60	109.00	193.00	359.00	
G753	Zazu		28.20	47.60	109.00	193.00	359.00	
G303B	Sweet Dreams			15.20	28.90	44.90	74.90	164.00
G309A	Ferenc Tender			11.90	22.90	35.60	59.90	129.00
G300	Yolo Wonder			11.90	22.90	35.60	59.90	129.00
G685	Alfonsina (AS)			15.20	28.90	44.90	74.90	164.00
G751	Yellow California Wonder (AS)			15.20	28.90	44.90	74.90	164.00
G742	Chocobell (AS)			16.30	31.70	47.60	79.90	177.00
G306	Pusztagold			11.90	22.90	35.60	59.90	129.00
G661	Liebesapfel (AS)			11.90	22.90	35.60	59.90	129.00
G755	Padron			16.30	31.70	47.60	79.90	177.00
G740	Fritz (AS)			16.30	31.70	47.60	79.90	177.00
G721	Flynn		28.20	47.60	109.00	193.00	359.00	
G720	Radja		28.20	47.60	109.00	193.00	359.00	
G674	Türkischer Gewürzpaprika (AS)			16.30	31.70	47.60	79.90	177.00
G304	De Cayenne			11.90	22.90	35.60	59.90	129.00
G778	Gelbes Rüsselchen (AS)			16.30	31.70	47.60	79.90	177.00
G657	Jalapeno Ruben			16.30	31.70	47.60	79.90	177.00
G804	Red Gunda (AS)			16.30	31.70	47.60	79.90	177.00
G684	Lila Luzi			16.30	31.70	47.60	79.90	177.00
G673	Habanero Orange			22.40	42.70	67.10	109.00	
G777	NuMex Suave			16.30	31.70	47.60	79.90	177.00

Tomatoes

Net prices in €

Item no.	Variety	Portion	suffice for	1 g	2 g	5 g	10 g	25 g	50 g
G418	Pilu	4.11	8 PL			only available in grain			
G419	Tica	4.11	8 PL			only available in grain			
G671	Bolstar Granda	4.11	8 PL			only available in grain			
G422	Matina	2.71	15 PL	10.90	17.60	35.80	58.60	124.00	221.00
G420	Hellfrucht	2.71	15 PL	10.90	17.60	35.80	58.60	124.00	221.00
G626	Dorenia (AS)	3.04	15 PL	14.60	23.20	47.90	77.90	164.00	289.00
G430	Quadro	3.04	15 PL	14.60	23.20	47.90	77.90	164.00	289.00
G802	Bellarubin (AS)	4.11	15 PL	25.60	43.30	88.70	158.00	359.00	664.00
G806	Duttingold (AS)	3.04	20 PL	14.60	23.20	47.90	77.90	164.00	289.00
G423	Goldene Königin	2.71	25 PL	13.20	21.20	43.40	70.60	149.00	269.00
G749	Green Zebra (AS)	2.71	25 PL	13.20	21.20	43.40	70.60	149.00	269.00
G431	Berner Rose	2.71	15 PL	13.20	21.20	43.40	70.60	149.00	269.00
G424	St. Pierre	2.71	25 PL	10.90	17.60	35.80	58.60	124.00	221.00
G734	Sonnenherz (AS)	4.11	20 PL	20.90	34.60	71.60	128.00	289.00	539.00
G750	Heart of Gold (AS)	4.11	20 PL	20.90	34.60	71.60	128.00	289.00	539.00
G429	San Marzano	2.71	25 PL	10.90	17.60	35.80	58.60	124.00	221.00
G766	Marmorossa (AS)	2.71	15 PL	10.90	17.60	35.80	58.60	124.00	221.00
G814	Donnavita	4.11	15 PL	20.90	34.60	71.60	128.00	289.00	539.00
G809	Rio Grande	4.11	20 PL	25.60	43.30	88.70	158.00	359.00	664.00
G659	Trixi (AS)	3.04	25 PL	23.40	37.40	75.90	124.00	266.00	475.00
G427	Zuckertraube	3.04	15 PL	13.30	21.40	43.30	70.60	149.00	269.00
G689	Goldiana (AS)	3.04	25 PL	23.40	37.40	75.90	124.00	266.00	475.00
G432	Yellow Submarine	3.04	25 PL	13.30	21.40	43.30	70.60	149.00	269.00
G623	Black Cherry	3.04	25 PL	13.30	21.40	43.30	70.60	149.00	269.00
G798	Datella (AS)	4.11	15 PL			only available in grain			
G767	Ormato	4.11	8 PL			only available in grain			

(AS) = Amateur variety. Due to seed regulations, seeds only provided in small packaging units.
Further information on p. 42

Tomatoes				Net prices in €					
Item no.	Variety	Portion	suffice for	1 g	2 g	5 g	10 g	25 g	50 g
G736	Philamina (AS)	3.04	25 PL	23.40	37.40	75.90	124.00	266.00	475.00
G433	Ruthje	4.11	15 PL			only available in grain			
G711	Primabella (AS)	4.11	8 PL			only available in grain			
G735	Resibella (AS)	4.11	8 PL			only available in grain			
G629	Bogus Fruchta (AS)	3.04	15 PL	14.60	23.20	47.90	77.90	164.00	289.00
G434	Rotkäppchen	2.71	25 PL	13.20	21.20	43.40	70.60	149.00	269.00
G607	Golden Currant	4.11	15 PL			only available in grain			
G608	Rote Murrel	4.11	15 PL			only available in grain			

Precision seed

Item no.	Variety	Grain		100 gr	250 gr	500 gr	1,000 gr	2,500 gr
G418	Pilu			32.10	71.20	128.00	227.00	467.00
G419	Tica			32.10	71.20	128.00	227.00	467.00
G671	Bolstar Granda			26.30	56.80	102.00	186.00	
G422	Matina			6.30	12.60	20.40	34.20	69.30
G420	Hellfrucht			6.30	12.60	20.40	34.20	69.30
G626	Dorenia (AS)			9.20	19.10	30.60	51.40	106.00
G430	Quadro			9.20	19.10	30.60	51.40	106.00
G802	Bellarubin (AS)			11.20	24.40	44.40	79.20	162.00
G806	Duttingold (AS)			9.20	19.10	30.60	51.40	106.00
G423	Goldene Königin			7.90	16.20	25.60	42.60	86.90
G749	Green Zebra (AS)			7.90	16.20	25.60	42.60	86.90
G431	Berner Rose			7.90	16.20	25.60	42.60	86.90
G424	St. Pierre			6.30	12.60	20.40	34.20	69.30
G734	Sonnenherz (AS)			10.20	21.80	35.60	58.90	121.00
G750	Heart of Gold (AS)			10.20	21.80	35.60	58.90	121.00
G429	San Marzano			6.30	12.60	20.40	34.20	69.30
G766	Marmorossa (AS)			6.30	12.60	20.40	34.20	69.30
G814	Donnavita			10.20	21.80	35.60	58.90	121.00
G809	Rio Grande			11.20	24.40	44.40	79.20	162.00
G659	Trixi (AS)			9.70	19.90	32.30	53.30	108.00
G427	Zuckertraube			5.20	11.20	17.90	29.70	61.40
G689	Goldiana (AS)			9.70	19.90	32.30	53.30	108.00
G432	Yellow Submarine			5.20	11.20	17.90	29.70	61.40
G623	Black Cherry			5.20	11.20	17.90	29.70	61.40
G798	Datella (AS)			11.20	24.40	44.40	79.20	162.00
G767	Ormato			38.90	82.90	144.00	269.00	
G736	Philamina (AS)			9.70	19.90	32.30	53.30	108.00
G433	Ruthje			11.20	24.40	44.40	79.20	162.00
G711	Primabella (AS)			32.10	71.20	128.00	227.00	
G735	Resibella (AS)			32.10	71.20	128.00	227.00	
G629	Bogus Fruchta (AS)			9.20	19.10	30.60	51.40	106.00
G434	Rotkäppchen			7.90	16.20	25.60	42.60	86.90
G607	Golden Currant			12.90	28.60	52.70	102.00	
G608	Rote Murrel			12.90	28.60	52.70	102.00	

Aubergine									Net prices in €	
Item no.	Variety	Portion	suffice for	1 g	2 g	5 g	10 g	25 g	50 g	100 g
G641	Zora (AS)	4.11	15 PL	only available in grain						
G681	De Barbentane	2.71	15 PL	10.80	17.40	34.40	58.30	123.00	217.00	387.00
G780	Lea (AS)	4.11	15 PL	24.70	39.90	79.40	124.00	264.00		

Precision seed

Item no.	Variety	Grain		100 gr	250 gr	500 gr	1,000 gr	2,500 gr
G641	Zora (AS)			17.30	36.40	58.40	97.60	184.00
G780	Lea (AS)			17.30	36.40	58.40	97.60	184.00

Net prices plus VAT currently applicable in the country of delivery

Physalis								Net prices in €		
Item no.	Variety	Portion	suffice for	100 gr	250 gr	500 gr	1,000 gr	2,500 gr		
G646	Schönbrunner Gold	3.04	30 PL	6.40	12.90	20.90	34.70	65.40		
Sweet corn								Net prices in €		
Item no.	Variety	Portion	suffice for	100 g	250 g	500 g	1 kg	2.5 kg	5 kg	10 kg
G455	Golden Bantam	3.04	40 PL	9.90	19.70	33.70	56.60	129.80	249.00	484.00
G456	Damaun (early) (AS)	3.04	40 PL			only available in grain				
G458	Tramunt (late) (AS)	3.04	40 PL			only available in grain				
G726	Sugrano (AS)	3.04	40 PL			only available in grain				

Precision seed

Item no.	Variety	Grain	500 gr	1,000 gr	2,500 gr	5,000 gr	10,000 gr	25,000 gr	50,000 gr
G456	Damaun (early) (AS)		13.80	22.30	47.60	81.60	145.00	338.00	641.00
G458	Tramunt (late) (AS)		13.80	22.30	47.60	81.60	145.00	338.00	641.00
G726	Sugrano (AS)		13.80	22.30	47.60	81.60	145.00	338.00	641.00

Leeks				Net prices in €						
Item no.	Variety	Portion	suffice for	5 g	10 g	25 g	50 g	100 g	250 g	500 g
G322	Hilari	1.82	100 PL	12.40	19.90	38.40	57.80	99.90	224.00	418.00
G733	Kulaures	2.71	100 PL	15.40	24.90	48.20	72.70	126.00	282.00	522.00
G794	New! Prelat (AS)	2.71	100 PL	15.40	24.90	48.20	72.70	126.00	282.00	522.00
G682	Philomene	2.71	100 PL	15.40	24.90	48.20	72.70	126.00	282.00	522.00
G323	Herbstriesen 2/Hannibal	1.82	100 PL	12.40	19.90	38.40	57.80	99.90	224.00	418.00
G759	Sevino	2.71	100 PL	15.40	24.90	48.20	72.70	126.00	282.00	522.00
G321	Haldor	2.71	100 PL	15.40	24.90	48.20	72.70	126.00	282.00	522.00
G324A	Blaugrüner Winter/Husky	2.71	100 PL	15.40	24.90	48.20	72.70	126.00	282.00	522.00
G326	Blaugrüner Winter/Avano	2.71	100 PL	15.40	24.90	48.20	72.70	126.00	282.00	522.00
G630	Freezo	2.71	100 PL	15.40	24.90	48.20	72.70	126.00	282.00	522.00

Precision seed

Item no.	Variety	Grain	2,500 gr	5,000 gr	10,000 gr	25,000 gr	50,000 gr	100,000 gr
G322	Hilari		25.30	40.60	62.40	119.00	207.00	369.00
G733	Kulaures		31.60	50.80	78.60	146.00	254.00	462.00
G682	Philomene		31.60	50.80	78.60	146.00	254.00	462.00
G323	Herbstriesen 2/Hannibal		25.30	40.60	62.40	119.00	207.00	369.00
G759	Sevino		31.60	50.80	78.60	146.00	254.00	462.00
G321	Haldor		31.60	50.80	78.60	146.00	254.00	462.00
G324A	Blaugrüner Winter/Husky		31.60	50.80	78.60	146.00	254.00	462.00
G326	Blaugrüner Winter/Avano		31.60	50.80	78.60	146.00	254.00	462.00
G630	Freezo		31.60	50.80	78.60	146.00	254.00	462.00

Seed strips

Item no.	Variety	7.5 m stripe
G733 SR	Kulaures	81.90
G323 SR	Herbstriesen 2/Hannibal	73.60
G321 SR	Haldor	81.90
G759 SR	Sevino	81.90
G326 SR	Blaugrüner Winter/Avano	81.90
G630 SR	Freezo	81.90
Standard format: 40 cm wide, every 30 cm perforated 2 x 2 cm; 280 seeds per plate; 7,000 seeds per 7.5 m stripe		

Onions				Net prices in €						
Item no.	Variety	Portion	suffice for	10 g	25 g	50 g	100 g	250 g	500 g	1 kg
G460	Stuttgarter Riesen	2.71	500 PL	5.90	11.20	18.40	29.40	61.40	108.00	198.00
G461	Sturon	2.71	500 PL	5.90	11.20	18.40	29.40	61.40	108.00	198.00
G462	Rijnsburger 5/Bajosta	3.04	400 PL	7.60	14.30	23.60	37.90	78.90	139.00	256.00
G718	Rijnsburger 5/Bingo	3.04	400 PL	7.60	14.30	23.60	37.90	78.90	139.00	256.00

(AS) = Amateur variety. Due to seed regulations, seeds only provided in small packaging units.
Further information on p. 42

Onions										Net prices in €
Item no.	Variety	Portion	suffice for	10 g	25 g	50 g	100 g	250 g	500 g	1 kg
G463	Robelja	3.04	400 PL	7.60	14.30	23.60	37.90	78.90	139.00	256.00
G760	Rose de Keruel	3.04	200 PL	16.80	32.20	53.90	84.90	179.00	317.00	572.00
G757	Cuisse de Poulet	3.04	300 PL	16.80	32.20	53.90	84.90	179.00	317.00	572.00
G808	Yellow Sweet Spanish	3.04	100 PL	16.80	32.20	53.90	84.90	179.00	317.00	572.00

Precision seed: size S: 2.00-2.25 mm; size M: 2.25-2.50 mm

Item no.	Variety	Grain	5,000 gr	10,000 gr	25,000 gr	50,000 gr	100,000 gr	250,000 gr	500,000 gr
G460 S/M	Stuttgarter Riesen		15.70	24.30	48.90	79.90	137.00	314.00	594.00
G461 S/M	Sturon		15.70	24.30	48.90	79.90	137.00	314.00	594.00
G462 S/M	Rijnsburger 5/Bajosta		20.40	31.30	62.90	104.00	177.00	409.00	784.00
G718 S/M	Rijnsburger 5/Bingo		20.40	31.30	62.90	104.00	177.00	409.00	784.00
G463 S/M	Robelja		20.40	31.30	62.90	104.00	177.00	409.00	784.00
G760 S/M	Rose de Keruel		45.80	70.90	142.00	234.00	394.00	912.00	1,745.00
G757 S/M	Cuisse de Poulet		45.80	70.90	142.00	234.00	394.00	912.00	1,745.00
G808 S/M	Yellow Sweet Spanish	Unfortunately not available for the 2024 growing season.							

Bunching onion										Net prices in €
Item no.	Variety	Portion	suffice for	10 g	25 g	50 g	100 g	250 g	500 g	1 kg
G466	Ischikrona	3.04	700 PL	8.30	15.40	25.40	40.60	85.20	149.00	274.00
G616	Winterheckenzwiebel	3.04	700 PL	8.30	15.40	25.40	40.60	85.20	149.00	274.00

Onion sets								Net prices in €		
Item no.	Variety			1 kg	3 kg	5 kg	10 kg	25 kg		
G521A	Sturon 10-22 mm			8.50	21.90	28.40	53.30	116.00	more quantities on enquiry	
G521C	Sturon 22-26 mm			5.20	13.50	18.70	33.90	71.50	more quantities on enquiry	
G758A	Stuttgarter Riesen			8.50	21.90	28.40	53.30	116.00	more quantities on enquiry	
G525	Red Baron			12.80	29.70	44.80	81.70	169.00	more quantities on enquiry	
G535	Schalotten 'Red Sun'			9.20	21.70	32.40	57.30		more quantities on enquiry	

Onion sets mix										Net prices in €
Item no.	Variety									750 g
G826	New! Colourful onion set (contains 250 g each of the varieties Sturon, Stuttgarter Riesen and Red Baron)									9.16

Winter onion sets										Net prices in €
Item no.	Variety									
G784	Shakespeare 10-22 mm			Regarding the prices for Winter onion sets please check our onlineshop at the beginning of April 2024.						

Please note: The onions Sturon and Stuttgarter Riesen are exclusively made for us from Demeter seeds. The quantity is limited. As the quantity is limited, we ask you to order from us in time. We reserve the right to make replacement deliveries in the event of delivery shortfalls. The onions are heat-treated (as a preventive measure against Fusarium and Peronospora).

Garlic							Net prices in €
Item no.	Variety	500 g	1 kg	3 kg	5 kg	10 kg	
G725	Cledor	18.40	26.70	76.30	95.50	181.00	more quantities on enquiry
G540	Thermidrome	Regarding the prices for autumn garlic please check our onlineshop at the beginning of April 2024.					
G785	New! Thüla (AS)	Regarding the prices for autumn garlic please check our onlineshop at the beginning of April 2024.					

Please note: An order for onion sets and garlic cloves are always treated separately and incur extra delivery costs. Because of their moisture content they cannot be sent out with seed. Despatch time is dependent on seasonal and weather conditions.

Onion sets and garlic cloves	Order period	Delivery period
Spring planting material	November till January	End February
Autumn planting material	May till August	Middle till end of September

Green manure variety				Net prices in €				
Item no.	Variety	Portion	suffice for	100 g	250 g	1 kg	5 kg	10 kg
D203	Field beans	3.04	15 m²			6.80	25.80	39.30
D210	Egyptian Clover	2.71	12 m²		5.10	14.80	57.20	98.90
D260	Blue lupin	3.04	20 m²			6.80	25.80	39.30
D110	Buckwheat	1.82	13 m²		3.50	8.70	32.70	49.50
D301	Sainfoin	2.71	3 m²		5.10	14.80	57.20	98.90
D116	Yellow Mustard	2.71	12 m²		5.10	14.80	57.20	98.90
D521	Birds Foot Trefoil			Unfortunately not available for the 2024 growing season.				
D220	Crimson Clover	2.71	10 m²		5.10	14.80	57.20	98.90
D470	New! Common flax 'Lirina'	2.71	8 m²		5.80	16.90	64.90	112.00
D115	Fodder/Oil radish	2.71	15 m²		6.10	17.50	67.70	119.00
D211	Persian Clover	2.71	22 m²		5.80	16.90	64.90	112.00
D10	Phacelia	3.04	20 m²		9.50	28.50	110.00	191.00
D520	Marigold for green manure					92.00	389.00	706.00
D201	Summer Vetch	1.82	4 m²		3.50	8.70	32.70	49.50
D300	Serradella	2.71	12 m²		5.10	14.80	57.20	98.90
D120	Sunflower	2.71	12 m²		6.10	17.50	67.70	119.00
D510	Tagetes for Nematode control	4.11	10 m²	22.30	45.30	134.00	519.00	904.00
D390	Perennial Rye	1.82	5 m²		3.50	8.70	32.70	49.50
D422	White clover, low growing	3.04	10 m²		14.20	42.30	163.00	283.00
D200	Winter Vetch	2.71	10 m²		5.10	14.80	57.20	98.90

Green manure mixtures				Net prices in €				
Item no.	Variety	Portion	suffice for	250 g	1 kg	5 kg	10 kg	
D490	Wild flower strip/Insect buffet	2.71	10 m²	5.80	17.20	67.00	117.00	
D420	Clover Grass	2.71	7 m²	6.10	17.50	67.70	119.00	
D421	Lucerne red clover grass mix	2.71	8 m²	6.10	17.50	67.70	119.00	
D424	Rapid ground cover mix	2.71	15 m²	4.90	14.80	57.90	99.00	
D400	Rye-Vetch mix	1.82	5 m²	3.50	8.70	32.70	49.50	
D423	Winterleguminosen	2.71	5 m²	4.90	14.80	57.90	99.00	

Herbs				Net prices in €							
Item no.	Variety	Portion	suffice for	2 g	5 g	10 g	25 g	50 g	100 g	250 g	500 g
K 8	Bush basil	2.71	10 m²		5.40	8.20	15.40	24.60	40.70	83.40	147.00
K10	Basil, medium	1.82	10 m²		3.80	5.60	10.50	16.90	27.40	55.90	101.00
K11	Basil, large leaved	1.82	10 m²		3.90	5.80	10.80	17.20	28.30	57.40	105.00
K12	Red basil	2.71	10 m²		5.40	8.20	15.40	24.60	40.70	83.40	147.00
K13	Lemon basil	2.71	10 m²		5.70	8.60	16.20	25.90	42.70	87.60	154.00
K92	Lime basil	2.71	10 m²		5.70	8.60	16.20	25.90	42.70	87.60	154.00
K14	Cinnamon basil	2.71	10 m²		5.70	8.60	16.20	25.90	42.70	87.60	154.00
K17	Thai basil	2.71	15 m²		5.40	8.20	15.40	24.60	40.70	83.40	147.00
K93	Holy basil	2.71	20 m²		5.70	8.60	16.20	25.90	42.70	87.60	154.00
K15	Summer savory 'Saturn'	1.82	20 m²			4.20	8.40	13.30	21.90	44.20	78.80
K16	Winter savory	2.71	10 m²	4.90	8.90	13.90	27.90	47.80	85.70	194.00	374.00
K18	Borage	1.82	10 m²			6.10	11.80	19.10	31.30	64.20	113.00
K20	Dill	1.82	2 m²				5.30	8.40	13.30	25.70	41.30
K22	Tetra dill	1.82	2 m²				6.10	9.60	15.40	29.90	48.10
K25	Cumin	1.82	10 m²				4.70	7.40	11.80	22.70	36.40
K30	Chervil	1.82	3 m²				6.10	9.60	15.40	29.90	48.10
K31	Coriander	1.82	5 m²			4.20	8.40	13.30	21.90	44.20	78.80
K32	Garden fennel	1.82	10 m²			4.20	8.40	13.30	21.90	44.20	78.80
K35	French sorrel	2.71	20 m²		5.80	8.90	17.80	28.40	46.10	93.90	166.00
K38	Lavender	2.71	10 m²	6.40	12.70	19.40	38.20	64.40	112.00	258.00	496.00
K40	Lovage	1.82	10 m²	3.70	6.80	10.40	19.60	31.40	54.50	118.00	221.00
K45	Sweet marjoram			Unfortunately not available for the 2024 growing season.							
K46	Pot marjoram	2.71	25 m²	4.90	8.90	13.90	27.90	47.80	85.70	194.00	374.00

(AS) = Amateur variety. Due to seed regulations, seeds only provided in small packaging units.
Further information on p. 42

Herbs											Net prices in €
Item no.	Variety	Portion	suffice for	2 g	5 g	10 g	25 g	50 g	100 g	250 g	500 g
K80	Oregano, Greek	2.71	10 m²	11.90	22.90	34.90	69.90	119.00	214.00	484.00	909.00
G310	Parsley 'Mooskrause 2'	1.82	4 m²			6.40	12.80	20.30	32.80	66.90	116.00
G311	Parsley 'Grüne Perle 2'	1.82	4 m²			6.40	12.80	20.30	32.80	66.90	116.00
G312	Parsley 'Einfache Schnitt 3'	1.82	4 m²			4.30	8.70	13.70	22.10	44.10	76.00
G313	Parsley 'Gigante d'Italia'	1.82	4 m²			4.30	8.70	13.70	22.10	44.10	76.00
G770	Parsley 'Amsterdamse Snij/ Felicia'	1.82	4 m²			4.30	8.70	13.70	22.10	44.10	76.00
K50	Burnet	2.71	10 m²		5.80	8.90	17.80	28.40	46.10	93.90	166.00
K51	Russian tarragon					Unfortunately not available for the 2024 growing season.					
K95	Winter tarragon	2.71	10 m²	11.90	22.90	34.90	69.90	119.00	214.00	484.00	909.00
K58	Sage	2.71	10 m²	3.60	5.70	8.70	17.40	29.30	51.40	118.00	224.00
K61	Chive 'Schmitt'	2.71	10 m²		5.80	8.90	17.80	28.40	46.10	93.90	166.00
K63	Chive 'Gonzales'	2.71	10 m²		5.80	8.90	17.80	28.40	46.10	93.90	166.00
K91	Garlic chives	2.71	5 m²	3.60	5.70	8.70	17.40	29.30	51.40	118.00	224.00
G409	Cutting celery 'Gewöhnlicher Schnitt'	1.82	8 m²		4.90	8.40	17.20	28.60	47.90	99.90	184.00
K64	Black cumin	1.82	10 m²		3.90	5.80	10.80	17.20	28.30	57.40	105.00
K65	Chop suey greens	2.71	10 m²		5.80	8.90	17.70	28.20	45.90	93.30	165.00
K70	Garden thyme 'Deutscher Winter'	2.71	10 m²	4.90	8.90	13.90	27.90	47.80	85.70	194.00	374.00
K73	Hyssop	2.71	10 m²		5.90	8.90	17.80	30.40	54.10	122.00	234.00
K79	Land cress	1.82	10 m²			4.20	8.40	13.30	21.90	44.20	78.80
K81	Watercress	2.71	8 m²	4.90	8.90	13.90	27.90	47.80	85.70	194.00	374.00
K90	Lemon balm	2.71	10 m²	4.90	8.90	13.90	27.90	47.80	85.70	194.00	374.00
K97	New! White catnip	2.71	2 m²	4.90	8.90	13.90	27.90	47.80	85.70	194.00	374.00

More quantities on enquiry

primed seed

Item no.	Variety	10 g	25 g	50 g	100 g	250 g	500 g
G783	Parsley 'Grüne Perle 2'	14.10	28.70	45.90	72.90	147.00	257.00
G781	Parsley 'Amsterdamse Snij/Felicia'	10.20	20.70	33.20	52.90	108.00	189.00

The discs have a diameter of 10 cm and the number of seeds make them suitable for size 11/12 pots.

Item no.	Variety	number of discs	100	500	1,000	5,000	10,000
K8 D	Bush basil		19.50	91.00	173.00	820.00	1,580.00
K11 D	Basil, large leaved		19.50	91.00	173.00	820.00	1,580.00
K12 D	Red basil		19.50	91.00	173.00	820.00	1,580.00
K15 D	Summer savory 'Saturn'		19.50	91.00	173.00	820.00	1,580.00
K20 D	Dill		19.50	91.00	173.00	820.00	1,580.00
K31 D	Coriander		19.50	91.00	173.00	820.00	1,580.00
K45 D	Sweet marjoram		Unfortunately not available for the 2024 growing season.				
G311 D	Grüne Perle (curled Parsley)		19.50	91.00	173.00	820.00	1,580.00
G312 D	Einfache Schnitt (plain leafed Parsley)		19.50	91.00	173.00	820.00	1,580.00
K63 D	Chive 'Gonzales'		19.50	91.00	173.00	820.00	1,580.00
K70 D	Garden thyme 'Deutscher Winter'		19.50	91.00	173.00	820.00	1,580.00
K90 D	Lemon balm		19.50	91.00	173.00	820.00	1,580.00
G480 D	Ruca (Rocket)		19.50	91.00	173.00	820.00	1,580.00
G246 D	Chinese leaves mixture		19.50	91.00	173.00	820.00	1,580.00
Price per disc			0.195	0.182	0.173	0.164	0.158

Summer flowers									Net prices in €	
Item no.	Variety	Portion	suffice for	1 g	2 g	5 g	10 g	25 g	50 g	100 g
B467	Anise Hyssop / <i>Agastache anisata</i>	2.71	400 PL	4.50	7.10	14.20	23.60	47.40	81.40	145.00
B654	New! Korean mint / <i>Agastache rugosa</i>	3.04	300 PL	9.90	16.20	33.90	56.50	114.50	204.00	360.00
B466	Flossflower / <i>Ageratum houstonianum</i>	2.71	500 PL	7.10	11.70	23.40	38.90	77.90	132.00	239.00
B110	Corncockle / <i>Agrostemma githago</i>	1.82	100 PL			3.70	5.40	11.80	20.40	35.40
B470	White Corncockle / <i>Agrostemma gracilis</i>	2.71	50 PL	4.50	7.10	14.20	23.60	47.40	81.40	145.00
B644	New! Hollyhock 'Lene' / <i>Althaea rosea</i>	2.71	25 PL		6.30	12.70	20.30	41.90	71.40	126.00
B117	Hollyhock / <i>Althaea rosea</i>	2.71	40 PL		3.70	6.60	10.80	22.60	38.20	66.60
B112	Surinam Amaranth / <i>Amaranthus tricolor</i>	2.71	900 PL		3.70	6.60	10.80	22.60	38.20	66.60
B468	Bishop's weed / <i>Ammi visnaga</i>	2.71	100 PL		3.70	6.60	10.80	22.60	38.20	66.60
B647	Dog Chamomile / <i>Anthemis tinctoria</i>	2.71	50 PL	6.40	10.20	20.90	34.90	70.40	121.00	218.00
B612	Snapdragon (cream coloured) / <i>Antirrhinum graniticum</i>	2.71	750 PL	7.10	11.70	23.40	38.90	77.90	132.00	239.00
B119	Snapdragon (tall mixture) / <i>Antirrhinum majus</i>	2.71	750 PL	7.10	11.70	23.40	38.90	77.90	132.00	239.00
B118	Snapdragon 'Black Prince' / <i>Antirrhinum majus</i>	2.71	750 PL	7.10	11.70	23.40	38.90	77.90	132.00	239.00
B120	Arnica / <i>Arnica montana</i>	2.71	60 PL	9.60	15.40	31.40	52.60	105.00	179.00	319.00
B122	Figwort, Creeping Snapdragon / <i>Asarina scandens</i>	3.04	200 PL	15.80	25.90	51.90	87.60	173.00	299.00	535.00
B617	Blue daisy / <i>Brachyscome iberidifolia</i>	2.71	400 PL	7.10	11.70	23.40	38.90	77.90	132.00	239.00
B130	Calendula (mixed) / <i>Calendula officinalis</i>	2.71	100 PL			3.50	5.20	10.90	18.20	27.60
B130A	Calendula (orange) / <i>Calendula officinalis</i>	2.71	100 PL			3.50	5.20	10.90	18.20	27.60
B135	Garden Aster / <i>Callistephus chinensis</i>	2.71	100 PL		6.30	12.70	20.30	41.90	71.40	126.00
B606	Aster 'Prinova' (mixed colours) / <i>Callistephus chinensis</i>	3.04	45 PL	9.90	16.20	33.90	56.50	114.50	204.00	360.00
B607	Aster 'Biedermeier' (mixed colours) / <i>Callistephus chinensis</i>	3.04	45 PL	9.90	16.20	33.90	56.50	114.50	204.00	360.00
B608	Peony Aster (mixed colours) / <i>Callistephus chinensis</i>	3.04	45 PL	9.90	16.20	33.90	56.50	114.50	204.00	360.00
B626	China Aster (mixed colours) / <i>Callistephus chinensis</i>	3.04	45 PL	9.90	16.20	33.90	56.50	114.50	204.00	360.00
B140	Bell Flower / <i>Campanula medium</i>	2.71	400 PL	9.60	15.40	31.40	52.60	105.00	179.00	319.00
B589	Safflower / <i>Carthamus tinctorius</i>	3.04	15 PL		4.80	9.80	15.60	31.90	54.90	97.70
B145	Cornflower (blue) / <i>Centaurea cyanus</i>	1.82	200 PL			3.90	6.20	13.10	21.70	36.90
B164A	Annual Chrysanthemum (mixed colours) / <i>Chrysanthemum carinatum</i>	2.71	80 PL	4.50	7.10	14.20	23.60	47.40	81.40	145.00
B175	Clarkia / <i>Clarkia elegans</i>	2.71	300 PL	7.10	11.70	23.40	38.90	77.90	132.00	239.00
B180	Dwarf Convolvulus / <i>Convolvulus tricolor</i>	3.04	50 PL		4.60	8.40	13.80	28.30	48.40	84.40
B185	Coreopsis / <i>Coreopsis tinctoria</i>	3.04	500 PL	4.80	7.70	15.60	25.90	51.90	88.50	159.00
B190	Cosmos (mixed colours) / <i>Cosmos bipinnatus</i>	2.71	50 PL		6.30	12.70	20.30	41.90	71.40	126.00
B193	White Cosmos / <i>Cosmos bipinnatus</i>	2.71	50 PL		6.30	12.70	20.30	41.90	71.40	126.00
B192	Orange Cosmos / <i>Cosmos sulphureus</i>	2.71	40 PL		6.30	12.70	20.30	41.90	71.40	126.00
B639	Billy Buttons / <i>Craspedia globosa</i>	2.71	60 PL	7.10	11.70	23.40	38.90	77.90	132.00	239.00
B635	Chinese forget-me-not / <i>Cynoglossum amabile</i>	2.71	45 PL	4.50	7.10	14.20	23.60	47.40	81.40	145.00
B200	Larkspur (mixed colours) / <i>Delphinium ajacis</i>	2.71	80 PL		6.40	12.90	21.50	43.50	74.60	133.00
B637	Amur Pink / <i>Dianthus amurensis</i>	2.71	200 PL		6.30	12.70	20.30	41.90	71.40	126.00
B210	Sweet William / <i>Dianthus barbatus</i>	1.82	200 PL		5.10	10.20	16.60	34.10	58.60	103.00
B643	Sweet William 'Chris' / <i>Dianthus barbatus</i>	1.82	200 PL		5.10	10.20	16.60	34.10	58.60	103.00
B619	Moldavian Dragonhead 'Arat' / <i>Dracocephalum moldavica</i>	1.82	100 PL			3.90	6.20	13.10	21.70	36.90
B461	Vipers Bugloss / <i>Echium plantagineum</i>	1.82	80 PL		5.10	10.20	16.60	34.10	58.60	103.00
B235	Californian Poppy / <i>Eschscholzia californica</i>	3.04	100 PL	4.80	7.70	15.60	25.90	51.90	88.50	159.00
B631	Californian Poppy 'Karminkönig' / <i>Eschscholzia californica</i>	2.71	100 PL	6.40	10.20	20.90	34.90	70.40	121.00	218.00
B465	White Gaura / <i>Gaura lindheimeri</i>	3.04	40 PL		4.80	9.80	15.60	31.90	54.90	97.70
B260A	Gilia (tricoloured) / <i>Gilia tricolor</i>	3.04	300 PL		4.80	9.80	15.60	31.90	54.90	97.70
B265	Godetia / <i>Godetia grandiflora</i>	3.04	400 PL		4.80	9.80	15.60	31.90	54.90	97.70
B270	Soapwort (white) / <i>Gypsophila elegans</i>	3.04	100 PL	4.80	7.70	15.60	25.90	51.90	88.50	159.00
B275	Sunflower mix 'La Torre' / <i>Helianthus annuus</i>	2.71	80 PL			3.60	5.40	11.70	19.40	32.90
B641	Sunflower 'Tamino' / <i>Helianthus annuus</i>	2.71	30 PL			3.50	5.20	10.90	18.20	27.60

(AS) = Amateur variety. Due to seed regulations, seeds only provided in small packaging units.
Further information on p. 42

Summer flowers										Net prices in €
Item no.	Variety	Portion	suffice for	1 g	2 g	5 g	10 g	25 g	50 g	100 g
B276	Sunflower 'Hella' / <i>Helianthus annuus</i>	2.71	80 PL.			3.60	5.40	11.70	19.40	32.90
B642	Sunflower 'Sinja' / <i>Helianthus annuus</i>	2.71	50 PL.			3.50	5.20	10.90	18.20	27.60
B277	Sunflower 'Velvet Queen' / <i>Helianthus annuus</i>	2.71	40 PL.			3.60	5.40	11.70	19.40	32.90
B624	Sunflower 'Valentin' / <i>Helianthus annuus</i>	2.71	30 PL.			3.60	5.40	11.70	19.40	32.90
B596	Sunflower 'Sunspot' / <i>Helianthus annuus</i>	2.71	40 PL.			3.60	5.40	11.70	19.40	32.90
B278	Branching Sunflower / <i>Helianthus debilis</i>	1.82	50 PL.		5.10	10.20	16.60	34.10	58.60	103.00
B280	Tall Straw Flower / <i>Helichrysum bracteatum</i> ‚Monstrosum‘	2.71	300 PL.	4.50	7.10	14.20	23.60	47.40	81.40	145.00
B616	Bitter Candytuft / <i>Iberis amara</i>	2.71	80 PL.		6.30	12.70	20.30	41.90	71.40	126.00
B296	Candytuft / <i>Iberis umbellata</i>	2.71	80 PL.		6.30	12.70	20.30	41.90	71.40	126.00
B614	Hummingbird vine / <i>Ipomoea quamoclit</i>	3.04	25 PL.		4.60	8.40	13.80	28.30	48.40	84.40
B300	Morning Glory / <i>Ipomoea rubro-coerulea</i>	3.04	15 PL.			5.30	8.90	18.30	29.90	51.20
B310	Sweet Pea / <i>Lathyrus odoratus</i>	3.04	20 PL.			5.30	8.90	18.30	29.90	51.20
B315	Annual Mallow / <i>Lavatera trimestris</i>	1.82	45 PL.		5.10	10.20	16.60	34.10	58.60	103.00
B627	Small-leaved Leonotus (Lion's Ear) / <i>Leonotis nepetifolia</i>	2.71	100 PL.	4.50	7.10	14.20	23.60	47.40	81.40	145.00
B321	Siberian Motherwort / <i>Leonurus sibiricus</i>	1.82	100 PL.		3.40	5.80	9.30	18.90	32.60	57.20
B330	Maroccan Flax / <i>Linaria maroccaria</i>	2.71	400 PL.	6.40	10.20	20.90	34.90	70.40	121.00	218.00
B335	Red Flax / <i>Linum grandiflorum</i>	2.71	80 PL.		4.40	8.70	13.80	28.20	48.50	85.20
B645	New! Sweet alyssum / <i>Lobularia maritima</i>	2.71	500 PL.		6.30	12.70	20.30	41.90	71.40	126.00
B343	Mallow Wort / <i>Malope trifida</i>	2.71	60 PL.		6.40	12.90	21.50	43.50	74.60	133.00
B613	Mallow Wort (white) / <i>Malope trifida</i>	2.71	60 PL.		6.40	12.90	21.50	43.50	74.60	133.00
B345	Chamomile / <i>Matricaria chamomilla</i>	1.82	2,000 PL.		5.10	10.20	16.60	34.10	58.60	103.00
B350	Love-in-the-mist / <i>Nigella damascena</i>	2.71	200 PL.			5.20	8.70	18.10	29.90	51.20
B351	Love-in-the-mist 'African Bride' / <i>Nigella papillosa</i>	2.71	400 PL.			5.20	8.70	18.10	29.90	51.20
B369	Field Poppy / <i>Papaver rhoeas</i>	1.82	1,500 PL.			6.90	11.90	24.60	40.80	68.40
B371	Poppy, white & red / <i>Papaver rhoeas</i>	2.71	1,500 PL.		6.30	12.70	20.30	41.90	71.40	126.00
B633	New! Phlox 'Märchenzauber' / <i>Phlox drummondii</i>	3.04	60 PL.		15.30	30.90	51.70	104.00	174.00	317.00
B625	White Mignonette / <i>Reseda alba</i>	2.71	1,000 PL.		3.70	6.60	10.80	22.60	38.20	66.60
B395	Black Eyed Susan / <i>Rudbeckia hirta</i>	2.71	400 PL.		6.40	12.90	21.50	43.50	74.60	133.00
B396	Black Eyed Susan 'Herbstwald' / <i>Rudbeckia hirta</i>	2.71	300 PL.		6.40	12.90	21.50	43.50	74.60	133.00
B462	Velvet Trumpet Flower / <i>Salpiglossis sinuata</i>	3.04	400 PL.	9.40	15.30	30.90	51.70	104.00	174.00	317.00
B399	Clary Sage / <i>Salvia sclarea</i>	3.04	85 PL.		5.90	11.90	19.90	39.90	68.90	124.00
B399A	Clary / <i>Salvia viridis</i>	1.82	120 PL.		5.10	10.20	16.60	34.10	58.60	103.00
B632	Mexican Creeping Zinnia / <i>Sanvitalia procumbens</i>	2.71	100 PL.	7.10	11.70	23.40	38.90	77.90	132.00	239.00
B400	Sweet Scabious / <i>Scabiosa atropurpurea</i>	1.82	30 PL.		5.10	10.20	16.60	34.10	58.60	103.00
B615	Garden campion / <i>Silene armeria</i>	2.71	300 PL.		6.40	12.90	21.50	43.50	74.60	133.00
B414	Upright Tagetes / <i>Tagetes erecta</i>	2.71	80 PL.		6.40	12.90	21.50	43.50	74.60	133.00
B415	French Marigold / <i>Tagetes tenuifolia</i>	2.71	150 PL.	6.40	10.20	20.90	34.90	70.40	121.00	218.00
B415A	French Marigold (mixed) / <i>Tagetes tenuifolia</i>	2.71	150 PL.	6.40	10.20	20.90	34.90	70.40	121.00	218.00
B571	Feverfew / <i>Tanacetum parthenium</i>	1.82	500 PL.	9.90	15.90	32.60	52.10	109.00	189.00	339.00
B415B	Mexican Sunflower / <i>Tithonia rotundifolia</i>	3.04	20 PL.		6.20	12.40	19.90	41.40	70.90	123.00
B636	Blue Lace Flower / <i>Trachymene coerulea</i>	2.71	80 PL.		6.40	12.90	21.50	43.50	74.60	133.00
B417	Nasturtium (trailing) / <i>Tropaeolum majus</i>	3.04	20 PL.				5.40	10.90	18.60	30.90
B418	Nasturtium (dwarf) / <i>Tropaeolum majus</i>	3.04	15 PL.				5.40	10.90	18.60	30.90
B469	Golden Marigold / <i>Ursinia calendulifolia</i>	2.71	140 PL.	4.50	7.10	14.20	23.60	47.40	81.40	145.00
B419	Valerian / <i>Valeriana officinalis</i>	2.71	400 PL.		6.40	12.90	21.50	43.50	74.60	133.00
B423	Tall Verbena / <i>Verbena bonariensis</i>	3.04	750 PL.		4.80	9.80	15.60	31.90	54.90	97.70
B618	Yellow Pansy / <i>Viola cornuta</i>	3.04	100 PL.	9.40	15.30	30.90	51.70	104.00	174.00	317.00
B422	Small Flowered Pansy / <i>Viola tricolor</i>	3.04	150 PL.	9.40	15.30	30.90	51.70	104.00	174.00	317.00
B460	Dwarf Zinnia / <i>Zinnia angustifolia</i>	2.71	100 PL.		6.40	12.90	21.50	43.50	74.60	133.00
B463	Zinnia 'Carroussel' / <i>Zinnia elegans</i>	2.71	50 PL.		6.40	12.90	21.50	43.50	74.60	133.00
B630	Zinnia 'Sommer in Orange' / <i>Zinnia violacea</i>	2.71	50 PL.	4.50	7.10	14.20	23.60	47.40	81.40	145.00

Ornamental grass										Net prices in €	
Item no.	Variety	Portion	suffice for	1 g	2 g	5 g	10 g	25 g	50 g	100 g	
B629	Tall prairie grass 'Fontaine' / <i>Panicum virgatum</i>	2.71	100 Pl.	4.50	7.10	14.20	23.60	47.40	81.40	145.00	

Summer flower mixtures										Net prices in €		
Item no.	Variety	Portion	suffice for	2 g	5 g	10 g	25 g	50 g	100 g	250 g	500 g	1 kg
B640	New! Cottage garden mix	3.04	1 m ²	4.80	9.80	15.60	31.90	54.90	97.70			
B566	Sommerpracht	3.04	1 m ²		11.90	20.70	45.90	80.90	142.50	329.00		
B609	Blossoming balcony	3.04	3 lfm	only available as set portions								
B570	Essbare Blüten (Edible flowers)	3.04	3 m ²	only available as set portions								
D490	Wild flower strip/ Insect buffet	2.71	7 m ²	more quantities under green manures								
B568	Bienenweide (Bee pasture)	2.71	2 m ²			7.40	11.60	19.90	46.40	82.90	159.00	
B623	Beneficial Insect Paradise	2.71	3 m ²			7.40	11.60	19.90	46.40	82.90	159.00	
B601	Wild flowers for dry positions	5.51	5 m ²	only available as set portions								
B602	Wild flowers for shade	5.51	5 m ²	only available as set portions								
B603	Wild flowers for butterflies	5.51	5 m ²	only available as set portions								

Official Approval (AS)

The abbreviation (AS) denotes varieties with a special approval under EU Regulation 2009/145/EC Seed: "Variety bred for growing under particular conditions and controlled by the Commission according to Article 26 of EU Regulation 2009/145/EC". The so-called Amateur Variety Regulations provide for a simplified approval procedure. Our usual high standards of quality apply to both varieties and seeds.



(AS) = Amateur variety. Due to seed regulations, seeds only provided in small packaging units. Further information on p. 42

General Terms and Conditions

§ 1 Scope

The following terms and conditions apply to all orders, offers and contracts (whether provided remotely, verbally or in writing) made with consumers and business customers outside of our online shop. Additional conditions apply to regular commercial traders.

A consumer is defined as a natural person who makes a legal transaction that is primarily of neither a commercial nor personal business nature. A business customer is a natural or legal person or society who makes a legal transaction which is part of their commercial or personal business activity.

For business customers these terms and conditions are also taken as applying to any subsequent trading arrangement without need of further reference to them from us. A different or extended set of terms and conditions adopted by the business will not be accepted; they can only form part of the contract with our expressed agreement. The General Terms and Conditions apply to all legal transactions entered into by the Bingenheimer Saatgut AG. These terms need to be accepted by the buyer at the latest on receipt of the goods. Any deviation from this is only valid if expressly agreed in text form. We will not supply customers who promote a hatred of foreigners, nationalism or the glorification of violence. We reserve the right in such cases to draw on the legally enshrined principle of contractual freedom to terminate the contract.

§ 2 Concluding of contract, delivery times, carriage

- (1) The display of products in our catalogue does not represent a firm offer on our part. Only once you as a customer have placed an order is there a binding commitment as per German Civil Code 145. Your order is confirmed on its receipt by post or telephone. The sale contract accompanies the delivery of the goods. This also serves as our declaration of acceptance.
- (2) We generally deliver to consumers within 4-5 working days and at most within 21 days following receipt of the order. Commercial customers usually receive their order within 2-3 working days or as requested at the time.
- (3) We cannot accept PO Boxes or c/o addresses as billing addresses. They can however be used for deliveries.
- (4) Fixed rate charges for postage and packing
For all orders with a delivery address within Germany there is a standard delivery charge as listed in below table. These charges apply to all further orders the same season. Where a seed order has to be sent in two parts no further delivery charge is made. Plant material is priced separately. The prices for deliveries of planting material are valid up to a product weight of 25 kg. For an order weight from 25 to 50 kg, 2 packages will be packed and thus double shipping costs from the table will be charged, etc.

Product	Delivery charge net
Seeds, books, tools	Packages with product weights ≤ 0.8 kg and a value < 250 € 4,35 €
Seeds, books, tools	a) Packages with product-weights > 0.8 kg b) Packages with a value > 250 € and product-weights ≤ 0.8 kg 7,65 €
plants and onion sets	7,65 €

- (5) Please refer to §5 (1) to (3), which also apply to the shipping costs.
- (6) For partial deliveries of one order and delivery within Germany we charge delivery costs only once.
- (7) Plant material like onion sets, garlic cloves, peonies and flower bulbs contain moisture to a certain extend. In order to preserve the quality of our seeds we cannot ship plant material and seeds together. The date for shipping is determined by the time of the harvest and it may vary depending on weather conditions. Plant material is sent separately and additional delivery costs are charged. Please note that we reserve the

right to check and, if necessary, cancel onion/garlic orders with delivery addresses abroad, depending on the country of delivery. Please note that we ship peonies and flower bulbs only to delivery addresses in Germany.

Express delivery arranged by telephone is invoiced according to actual costs.

Payment on Delivery: If seller and buyer agree payment on delivery the buyer must pay the cost involved. At least 14.50 euros will be added to the invoice.

- (8) The delivery contract starts at the seller's site. Place of delivery is sellers place of business. In the case of business costumers the transfer of responsibility occurs when goods are collected by the delivery service.

§ 3 Usage

All seeds offered are not suitable for consumption. With the exception of cress, the seeds are also not suitable for sprouting, especially if the sprout and seed are consumed as a single unit. Cress and barley used for the product 'Smoothie-Gras' are subject to laboratory microbiological examination.

§ 4 Orders from abroad

- (1) We deliver only to private customers within the EU countries and the EFTA countries (Iceland, Liechtenstein, Norway, Switzerland) and Vatican State.
- (2) Commercial customers in the EU:
Commercial customers within the EU need to provide their VAT number with their order. Where none is given the sales tax applicable in the country of delivery will be added to the price. For shipments within the EU to customers with a valid VAT certificate we are legally required to generate a proof of delivery. Customers are bound under the terms of the purchase contract to fill in and return the receipt form provided. Any additional delivery costs incurred will be added to the invoice.
- (3) Commercial customers from outside the EU:
Shipments to destinations outside the EU are possible only within the EFTA countries (Iceland, Liechtenstein, Norway, Switzerland) and Vatican State and with prior agreement. Special conditions apply. The extra administrative costs and any additional charges are passed on to the buyer.
Full payment is required prior to delivery. Transfer payments from abroad must be made in Euros. Any additional transfer charges will be added to the invoice.
The delivery contract begins at the seller's site. Place of delivery is sellers place of business. The commercial buyer carries the transportation risk.
- (4) Costs of delivery abroad:
The following table shows the net cost of delivery to your country.

Countries	Packages with productweights ≤ 0.8 kg and a value < 250 €	a) Packages with product-weights > 0.8 - 25 kg b) Packages with a value > 250 € and product-weights ≤ 0.8 kg
Belgium, Netherlands, Luxembourg	7,65 €	19,25 €
EFTA and other EU-countries (except Canary Islands)	8,75 €	21,45 €
Canary Islands	8,75 €	35,20 €

- (5) Please refer to §5 (1) to (3), which also apply to the shipping costs.
- (6) The prices are valid for seeds, books, tools and plant materials with a product weight up to 25 kg. For an ordered weight from 25 to 50 kg, two packages were packed. So the delivery costs are twice as much calculated from table etc.

- (7) If the customer specifies a particular shipping provider, it may result in higher shipping costs. We reserve the right to charge the customer for these additional costs in relation to our flat rates stated here.
- (8) Delivery outside the EU: Depending on the type of crop, additional costs or fees for the issuing of a phytosanitary certificate may be charged for imports into some countries. These charges currently (09/2023) amount to 50 euros, which are to be paid by the customer. At a later date, higher or lower costs may be incurred. Do not hesitate to contact us if you want to know the exact amount of the charges at the time of your order.

§ 5 Prices and payment conditions

- (1) All prices are subject to the applicable sales tax rates in the respective country of delivery. The VAT rates are prescribed by law. Each new price list renders the previous one invalid. Printing errors excepted.
- (2) The price and/or shipping list is valid until the next price list is published. We reserve the right to adjust prices at short notice for goods subject to statutory pricing without separate information (e. g. books).
- (3) An updated price list will be sent to the customer by Bingenheimer Saatgut AG when it is published and will replace the previous one. If we have the customer's e-mail address, this notification will be sent by e-mail.
- (4) Unless otherwise agreed all invoices must be paid in full upon receipt.
- (5) New customers with orders worth more than 200 Euros are required to pay in advance.
- (6) In case of special reasons (e.g. announcement of insolvency, delayed payments in the past), we are authorised to demand advance payment from our regular customers.
- (7) Invoices may be sent by mail or e-mail at our discretion. The customer agrees to receive invoices electronically. Electronic invoices will be sent to the customer by e-mail in PDF format to the e-mail address provided by the customer for the purpose of receipt.

§ 6 Reservation of Ownership

We retain ownership of all goods until full payment is received. Where business customers are concerned: We reserve ownership rights over the goods until all claims are settled as part of an ongoing business relationship. They can dispose of the reserved goods as part of their business; the income arising from this subsequent sale shall be assigned to and accepted by us in advance – whether or not new items are included with the reserved goods – for the amount invoiced. They retain the power to resist the claim, but we can also demand payment should they not honour their debts.

§ 7 Right to cancel and cancellation instruction

- (1) A consumer's legal right to cancel is written into the cancellation policy. Businesses customers are not granted a voluntary right to cancel.
- (2) Model instructions on consumer's cancellation

Right to cancel

You have the right to cancel this contract within 14 days without giving any reason. The cancellation period will expire after 14 days from the day on which you acquire, or a third party other than the carrier and indicated by you acquires, physical possession of the last good.

To exercise the right to cancel, you must inform us (Bingenheimer Saatgut AG, Kronstr. 24, D - 61209 Echzell, info@bingenheimersaatgut.de, Phone: +49 (0) 6035 1899-0 Fax: +49 (0) 6035 1899-40) of your decision to cancel this contract by a clear statement (e.g. a letter sent by post, fax or e-mail). You may use the attached model cancellation form, but it is not obligatory.

To meet the cancellation deadline, it is sufficient for you to send your communication concerning your exercise of the right of cancel before the cancellation period has expired.

Effects of cancellation

If you cancel this contract, we will reimburse to you all payments received from you, including the costs of delivery (except for the supplementary costs arising if you chose a type of delivery other than delivery other than the least expensive type of standard delivery offered by us), without undue delay and in any event not later than 14 days from the day on which we are informed about your decision to withdraw from this contract.

We will make the reimbursement using the same means of payment as you used for the initial transaction, unless you have expressly agreed otherwise; in any event, you will not incur any fees as a result of such reimbursement. We may withhold reimbursement until we have received the goods back or you have supplied evidence of having sent back the goods, whichever is the earliest.

You shall send back the goods or hand them over to us, without undue delay and in any event not later than 14 days from the day on which you communicate your withdrawal from this contract to us. The deadline is met if you send back the goods before the period of 14 days has expired. You will have to bear the direct cost of returning the goods. In case of goods, which by their nature cannot normally be returned by post, the cost is estimated at a maximum of 100 EUR. You are only liable for any diminished value of the goods resulting from the handling other than what is necessary to establish the nature, characteristics and functioning of the goods.

There is no right to cancel contracts for orders of the following:

- orders for goods which perish easily or whose expiration date is surpassed quickly. This concerns in particular flower bulbs and peonies.
- orders for goods which are mixed inseparably after delivery with other commodities.

End of cancellation instruction

(3) Model instructions on cancellation

(If you want to cancel the contract, please fill out the form below and send it back to us.)

To Bingenheimer Saatgut AG, Kronstr. 24, 61209 Echzell
info@bingenheimersaatgut.de, Fax: 0049 6035 1899-40

I / We[*] hereby give notice that I / We[*] cancel my/our [*] contract of sale of the following goods [*]/for the supply of the following service[*]
Ordered on [*] / re-ceived on [*] _____
Name of consumer(s) _____
Address of consumer(s) _____

Signature of consumer(s) (only if this for is notified on paper)

Date ____/____/_____

[*] Delete as appropriate

(4) In case of cancellation

We do not collect the goods from you in case of cancellation. The return shipment costs in the case of cancellation shall be borne by you.

§ 8 Liability

We accept full liability for any damage caused by ourselves, our legal representatives or our agents.

- Regarding harm to life, body or health
- Wilful or negligent dereliction of duty
- Agreed promise of guarantee
- To the extent that it is commensurate with the laws on product liability

When significant infringements of the contractual obligations occur and affect the way the contract is implemented and the trust of contract partners (cardinal duties) and are found to be due to negligence on the part of ourselves, our legal representatives or our agents, the liability we carry is limited to the amount originally estimated when the contract was concluded. Claims for damages beyond this are excluded.

§ 9 Warranty

Unless otherwise expressly agreed full statutory warranty rights apply. For consumers the warranty is limited to one year following delivery of the goods.

For traders any claims must be made within one year of the transfer of risk; the statutory claim period (as determined by Act 478 BGB) remains unaffected.

In accordance with Act 377 HGB: Where both parties consider the purchase a trade transaction, it is up to the buyer to inspect the goods as soon as possible after delivery and should they prove defective to immediately inform the seller. Failure to do this implies acceptance of the goods unless there is a defect which could not be detected on inspection. Where such a defect is subsequently discovered the information must be passed on immediately; otherwise the goods will be deemed accepted despite the defect. A timely submission is sufficient to secure the purchaser's rights. If the seller deliberately conceals the protection provided by these rules cannot be invoked.

For traders/business customers, the only valid descriptions of varieties and products are those provided by the producer and which are included in the contract; we bear no liability for public statements and other promotions made by the producer. The variety descriptions do not constitute a guarantee. All the quality data supplied by the seller concerning germination, technical and genetic purity as well as seed health are based on its own tests. The quality data applies solely to the moment when these tests were carried out by the seller. A direct connection between these results and those experienced by the buyer cannot be assumed. Results are dependent on site, cultivation and / or climatic conditions. The product information contains neither a direct nor implied statement of consistency in the seed. Indications as to resistance levels accord with standard variety descriptions. They do not constitute a guarantee.

Where the goods supplied to business customers turn out to be defective we may decide to either remove the defect or offer a replacement.

Insofar as we are obliged to pay compensation for damages our liability towards entrepreneurs is limited to the value of the goods of the seeds.

The limitations and time limits given above do not apply to claims for damages caused by us, our legal representatives or our agents.

- Regarding harm to life, body or health
- Wilful neglect or gross dereliction of duty and fraud
- When significant infringements of the contractual obligations occur and affect the way the contract is implemented and the trust of contract partners (cardinal duties)
- Agreed promise of guarantee
- To the extent that the product liability law applies

§ 10 Returns policy for consumers

(1) The satisfaction of our customers is our primary concern. Please get in touch with us first before making any returns. The returns cost is carried by the buyer. Please bear in mind that any seed returned cannot generally be sold on since the unknown transport and storage conditions of the seed could change its germination capacity.

(2) When making returns please take care to prevent damage in transit. We recommend the use of cushioned packaging otherwise seed can be damaged during handling.

Returns for traders

There is no returns policy for traders. To return any defective goods please get in touch.

§ 11 Commercial multiplication

The multiplication of seeds is strictly regulated. The multiplication of Kultursaat varieties – in the spirit of using goods held as commons – requires an appropriate agreement with Kultursaat e.V. This information must be clearly communicated to any further buyer of these goods.

§ 12 Intellectual property and users' rights

The buyer may not use trademarks, symbols, pictures, trade descriptions and designs of Bingenheimer Saatgut AG and Kultursaat e.V. without express written permission. This must be clearly communicated to any subsequent buyer of these products.

§ 13 Quality assurance and cultivation guidelines

(1) Bingenheimer Saatgut AG supplies exclusively organic seed. The original seed (Elite seed) primarily comes from biodynamic or organic maintained stock. The varieties being offered have been developed using traditional breeding methods such as for example selection, mass selection or crossing. The varieties bearing the Kultursaat logo have in addition been bred using biodynamic criteria. All the varieties are open pollinated. In producing seed we take care to exceed the statutory planting distances between related varieties. This and other measures such as insect proof greenhouses helps to prevent unwanted hybridisation.

The measures taken to assure quality in the production of seed will in future help to prevent the unwanted crossing with genetically modified organisms. Organic seed must remain free from the smallest traces of hybridised GM plants. We make every possible effort to achieve this goal.

(2) Seed is alive! Plants live in relationship to their surroundings. They react to differing environmental conditions and adapt individually to them. In order to meet the seed and variety requirements of growers we have developed a comprehensive system of quality management which is under continual improvement.

(3) The descriptions, recommendations, pictures and illustrations used for promotion in the catalogue, website, flyers or brochures, arise out of our experiences and the trials carried out by breeders and customers. They are only for purposes of comparison. Plant development can vary considerably depending on factors such as climate, weather, planting time etc. Buyers need to decide for themselves whether the chosen varieties suit the regional conditions. The germination capacity indicated on the seed packet is true for the moment of delivery.

§ 14 Information about Online Dispute Resolution

Online Dispute Resolution as determined in Art. 14, Parag. 1 ODR - Regulation (EU) No 524/2013: The European Commission platform for dispute resolution can be found at <https://ec.europa.eu/consumers/odr/>. We are not obliged to appear before a consumer arbitration tribunal nor are we prepared to do so.

Further consumer information

1. Spinach, spinach beet, beetroot, sorrel and parsley are all vegetables with a high oxalic acid content. The frequent raw consumption of oxalic acid rich food in large quantities can lead to health problems.
2. Unripe tomatoes should not be eaten because of their high solanin content – hands should be washed thoroughly after pinching out the side shoots of tomato plants.
3. Unripe aubergines whose flesh has a green coloration or very bitter taste due to the high solanin content should not be eaten.
4. Where bitterness develops in members of the marrow family (cucumbers, squashes, courgettes etc.), substances classed as toxic have accumulated. They should therefore not be consumed.
5. All garden and runner beans should not be consumed raw since they contain phasine (toxic lecithin). This is destroyed by cooking.
6. The raw consumption of large amounts of salsify which contains inulin can produce a lot of wind.
7. The consumption of St. John's Wort and the leaves of buckwheat can make the skin of both humans and animals sensitive to sunlight.
8. The indications given for the use of herbs or edible flowers are taken from botanical literature. We take no responsibility for the correctness or otherwise of these indications.
9. People with food allergies should take advice before eating. Those suffering from flavismus should under no circumstances consume the seeds of broad beans or come into contact with the pollen.

This consumer information does not claim to be complete and exhaustive.

§ 15. Concluding conditions

- (1) The contract language is German.
- (2) Laws of the German Federal Republic and the UN buyers convention apply. Rules applying in the country where you live continue unchanged.
- (3) Whether you are classed as a merchant, a legal person or public body, our place of business is the exclusive place of jurisdiction for any Litigation concerning contractual relationships between you and ourselves. The same applies to consumers for whom a general place of court is not available, you have gone abroad since signing the contract or if your address is unknown when the case is being heard.
- (4) If certain conditions in this contract prove ineffective or contradict legal requirements it will not affect the remainder of the contract. An agreement will be reached between the contractual partners to replace the ineffective condition with a legally effective alternative that reflects as closely as possible the economic purpose of the original one. The same proposition applies where rules are absent.

Privacy Policy

You are receiving this catalogue because you have previously made purchases or ordered the catalogue from us. We will destroy the data held on anyone who has not ordered anything from us over the last two years. If you don't place an order you will therefore receive a maximum of two further catalogues. You may cancel this direct marketing that we are pursuing in accordance with Article 6, sub-section 1 f. DSGVO, at any time.

The protection of your data is of particular concern to us. We will use your data in compliance with the german Bundesdatenschutzgesetz (BDSG) and the EU General Data Protection Regulation.

Controller of your personal data is:

Bingenheimer Saatgut AG | Kronstr. 24, 61209 Echzell | Telefon: 06035 18 99-0
Our external data protection officer is:
Maja Reuter | Anwaltskanzlei Feuerhake | Obere-Masch-Str. 22
37073 Göttingen | Tel: +49-(0)-551-5311924
E-mail: datenschutz@bingenheimersaatgut.de

1. Your rights

You have the right of access, the right to rectification, to erasure ("right to be forgotten") and the right to restriction of processing of your personal data in accordance with Art. 15- 18 GDPR. You have the right to data portability in accordance with Art. 20 GDPR. You have the right to object, in particular to the processing of your data for the purposes of direct marketing and to processing which we carry out on the basis of legitimate interests in accordance with Art. 21 GDPR. You also have the right to lodge a complaint with a supervisory authority, for us this is: Der Hessische Beauftragte für Datenschutz und Informationsfreiheit (Prof Dr. Alexander Roßnagel), Postfach 3163, 65021 Wiesbaden, e-mail: Poststelle@datenschutz.hessen.de, Telephone: +49 611 1408 - 0, Fax: +49 611 1408 - 900.

- 2. Data processing for contract performance/direct marketing
If we conclude a contract, e.g. for the delivery of goods, the provision of a service or the creation of a work, we process the data provided by you (e.g. name, address, date of birth, e-mail address, telephone number, fax number, bank details) for contract performance. You have to fill out the marked mandatory fields. Without these details we are not in a position to fulfil the contract. The data will be processed in our customer database within the EU.

When you order goods, we transfer the data required for delivery to a transport company for the purpose of delivery and notification.
The legal basis for data processing is Art. 6 para. 1 lit. b) GDPR.
If you are in default of payment, we reserve the right to transfer your above-mentioned data to a debt collection agency or a law firm and if it is necessary to courts and public authorities for the enforcement of our claims on the basis of legitimate interests within the meaning of Art. 6 para. 1 lit. f) GDPR.

We reserve the right to use your data beyond the end of the contract on the basis of legitimate interests within the meaning of Art. 6 para. 1 lit. f) GDPR. This is in particular to increase customer loyalty through advertising. For this purpose, we may send you offers and information by letter post, as well as - insofar as we are permitted within the scope of § 7 para. 3 UWG - direct advertising for our own similar goods or services by e-mail. If necessary, we transfer your data (name and address) to a service provider, who processes them on our behalf in order to send the advertising mailings. You can object to the processing of your data for this purpose at any time under the given contact information. After objection to the use for direct marketing, we restrict the processing of your data for further use and erase them after expiry of the retention periods under tax and commercial law, unless you have freely given your consent for further use.

Bingenheimer Saatgut AG

Kronstraße 24 | 61209 Echzell
Phone: +49 (0) 6035 1899-0 | Fax +49 (0) 6035 1899-40
E-Mail: info@bingenheimersaatgut.de
Internet: www.bingenheimersaatgut.de/en
DE-ÖKO-007-Control body

GLS Gemeinschaftsbank eG

BIC: GENODEM1GLS
IBAN: DE90 4306 0967 6003 9273 00

Sparkasse Oberhessen

BIC: HELADEF1FRI
IBAN: DE82 5185 0079 0086 0016 08
USt-IdNr.: DE217305770





Bingenheimer Saatgut AG
Kronstraße 24
61209 Echzell-Bingenheim

E-Mail: info@bingenheimersaatgut.de
Onlineshop: www.bingenheimersaatgut.de/en

Please select:

- ☐ Commercial grower, organisation _____
- ☐ Garden of a social institution _____
- ☐ School garden
- ☐ Back garden

Customer number: _____
(see envelope of catalogue or last year's invoice number)

Payment address:

Name: _____

Street: _____

Post code, town, country: _____

Telephone/Fax: _____

E-Mail: _____

For customers from EU or abroad:

Tax (VAT) No: _____

Delivery address (if different from payment address):

Name: _____

Street: _____

Post code, town, country: _____

[illegible]

I accept the terms and conditions. I have read and understood the conditions concerning the return of goods.

Date, Signature _____



Order Form



Bingenheimer Saatgut AG
Kronstraße 24
61209 Echzell-Bingenheim

Phone: +49(0)6035 1899-0
Fax: +49(0)6035 1899-40

E-Mail: info@bingenheimersaatgut.de
Onlineshop: www.bingenheimersaatgut.de/en

Please select:

☐ Commercial grower, organisation _____

☐ Garden of a social institution _____

☐ School garden

☐ Back garden

Customer number: _____
(see envelope of catalogue or last year's invoice number)

Payment address:

Name: _____

Street: _____

Post code, town, country: _____

Telephone/Fax: _____

E-Mail: _____

For customers from EU or abroad:
Tax (VAT) No: _____

Delivery address (if different from payment address):

Name: _____

Street: _____

Post code, town, country: _____

Item no.	Quantity / unit	Variety	Alternative variety

I accept the terms and conditions. I have read and understood the conditions concerning the return of goods.

Date, Signature _____



Bingenheimer Saatgut AG
Kronstraße 24
61209 Echzell-Bingenheim

Onlineshop: www.bingenheimersaatgut.de/en

☐ Back garden

Tax (VAT) No: _____

Post code, town, country: _____

[illegible]

Date, Signature _____



Order Form



Bingenheimer Saatgut AG
Kronstraße 24
61209 Echzell-Bingenheim

Phone: +49(0)6035 1899-0
Fax: +49(0)6035 1899-40

E-Mail: info@bingenheimersaatgut.de
Onlineshop: www.bingenheimersaatgut.de/en

Please select:

- ☐ Commercial grower, organisation _____
- ☐ Garden of a social institution _____
- ☐ School garden
- ☐ Back garden

Customer number: _____
(see envelope of catalogue or last year's invoice number)

Payment address:

Name: _____

Street: _____

Post code, town, country: _____

Telephone/Fax: _____

E-Mail: _____

For customers from EU or abroad:
Tax (VAT) No: _____

Delivery address (if different from payment address):

Name: _____

Street: _____

Post code, town, country: _____

Item no.	Quantity / unit	Variety	Alternative variety

I accept the terms and conditions. I have read and understood the conditions concerning the return of goods.

Date, Signature _____



Certificates for download

On our website you can find our certificates in accordance with the EU organic regulation and certificates from the Demeter, Bioland and Naturland growing associations. You can download these documents for your company's organic inspections.



www.bingenheimersaatgut.de/en/certificates



Our catalogue is available in other languages

You can get both our main 2023|2024 catalogue and the new product catalogue 2024 in German and Dutch. There is also a French translation of all the variety descriptions. The various language versions can be found on our website:

www.bingenheimersaatgut.de/en/catalogue

Retail assortment: Biodynamic Seed for the amateur garden

- Popular assortment of seeds selected for the amateur gardener.
- Descriptions and details given in English, Danish and Dutch. Clear price brackets shown both on the packets and display stand.
- Special seed packets displaying a highly descriptive picture of the plant and growing instructions. Distributed in units of 5 seed packets of each variety.
- New tasty and disease-resistant varieties for organic cultivation, and traditional ones as well. About 95 different vegetables, flowers and herbs.
- A nice wooden display unit with 42 or with 96 hooks. These are made by disabled people in the workshops of the Bingenheim Community. Also available is a small sturdy display strip or a table display for 7-12 seed packets, suitable as a secondary display or for the smaller shop.
- Our products may be procured from your wholesaler or directly from us. Prices and order form available on request:
haendlershop@bingenheimersaatgut.de



Imprint

Editor:
Bingenheimer Saatgut AG;
Sitz: Echzell,
Amtsgericht Friedberg HRB 4963
Coordination: Lydia Eickhoff
Set: hgs 5 Gmbh, Fürth

Translation:
Bernard Jarman, Wiebke Boller,
Elaine Balkenhol, Jecaro e.K.
Pictures: Christian Pochodzala;
Debra Bardowicks; dbv/Sabine
Rübensaar; Laura Bolleßen; Kul-
tursaat e. V.; Michael Buß; Michael
Osterhaus; Robin Elfes; Ulli Dirks

Drawings: Franziska Körner
Print: Druckhaus Kaufmann, Lahr
Printed on recycled and Blue
Angel awarded paper.

All rights reserved.

Corrected version December 2023



Bingenheimer Saatgut AG

Novelties 2024

Phone: +49 (0) 6035 1899-0
Fax: +49 (0) 6035 1899-40
E-Mail: info@bingenheimersaatgut.de

Certificates, current disposability of seeds:
www.bingenheimersaatgut.de/en/

We are reachable by telephone:

Monday to Thursday from 9 am-4 pm
Friday from 9 am-1.30 pm

In July and August
Monday to Friday from 9 am-1.30 pm



DE-ÖKO-007

